



TIRE CHANGER USER MANUAL

TC-530-UL/CSA

Pls read this manual before operation

IMPORTANT SAFETY INSTRUCTIONS

1. Read all instructions.
2. Do not operate equipment with a damaged cord or if the equipment has been dropped or damaged – until it has been examined by a qualified service person.
3. Do not let a cord hang over the edge of the table, bench, or counter or come in contact with hot manifolds or moving fan blades.
4. If an extension cord is necessary, a cord with a current rating equal to or more than that of the equipment should be used. Cords rated for less current than the equipment may overheat. Care should be taken to arrange the cord so that it will not be tripped over or pulled.
5. Always unplug equipment from electrical outlet when not in use. Never use the cord to pull the plug from the outlet. Grasp plug and pull to disconnect.
6. Let equipment cool completely before putting away. Loop cord loosely around equipment when storing.
7. To reduce the risk of fire, do not operate equipment in the vicinity of open containers of flammable liquids (gasoline).
8. Keep hair, loose clothing, fingers, and all parts of body away from moving parts.
9. To reduce the risk of electric shock, do not use on wet surfaces or exposed to rain.
10. Use only as described in this manual. Use only manufacturer's recommended attachments.
11. **ALWAYS WEAR SAFETY GLASSES.** Everyday eyeglasses only have impact resistant lenses, they are not safety glasses.
12. To reduce the risk of injury, close supervision is necessary when this product is used around children. (Pertains to cabinets only.)
13. To reduce the risk of electric shock or fire, never overload receptacles. Refer to markings for the proper load on receptacles.

SAVE THESE INSTRUCTIONS

1. INTRODUCTION

The purpose of this manual is to provide the owner and operator of this machine with a set of safe and practical instructions for the use and maintenance of the tire changer.

If such instructions are carefully followed, the machine will offer you the levels of efficiency and duration. The following paragraphs define the levels of danger regarding the machine.



DANGER: REFERS TO IMMEDIATE DANGER WITH THE RISK OF SERIOUS INJURY OR DEATH.



WARNING: DANGERS OR UNSAFE PROCEDURES THAT CAN CAUSE SERIOUS INJURY OR DEATH.



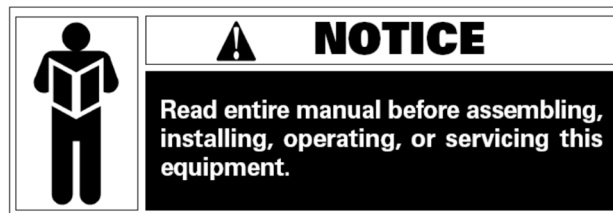
CAUTION: DANGERS OR UNSAFE PROCEDURES THAT CAN CAUSE MINOR INJURIES OR DAMAGE TO PROPERTY.



IMPORTANT: REMINDERS AND SPECIAL NOTES

Read these instructions carefully before using the machine. Keep this manual and the illustrated materials supplied with the equipment in a folder near the place of operation so as to allow the machine operators to consult the documentation at any time.

The manual is only to be considered valid for the machine serial number and model stated on the attached nameplate.



The instructions and information described in this manual must always be complied with. The operator will be held responsible for any operation not specially described and authorized in this manual.

Some of the illustrations contained in this booklet have been taken from pictures of prototypes: standard production machines may differ slightly in certain respects. These instructions are for the attention of personnel with basic mechanical skills. We have therefore condensed the descriptions of each operation by omitting detailed instructions regarding, for example, how to loosen or tighten the , xing devices. Do not attempt to perform operations unless properly qualified or with suitable experience. If necessary, please contact an authorized Service Center for assistance.

UNPACKING:



Take the utmost care when unpacking, assembling, lifting, and setting up the machine as indicated below. Failure to observe these instructions can damage the machine and compromise the operator's safety.

Remove the original packing materials after positioning them as indicated on the packaging.



All regulations in force concerning safety at work must be complied with when choosing the installation position. In particular, the machine must only be installed, and operated in protected environments where there is no risk of exposure to dripping water.



For the correct and **Safe Operation of the Machine**, the **Lighting Level** in the place of use should be a **minimum of 300 lux**.

Environmental operating conditions must comply with the following requirements:

- Relative humidity ranging from 30% to 95%
- Temperatures range from 0° to +45°C.

SAFETY REGULATIONS:



Failure to comply with the instructions and danger warnings can cause serious injuries to the operator or other persons. Do not operate the machine until you have read and understood all the **Danger & Warning** notices in this manual.

The correct use of this machine requires a qualified and authorized operator. This operator must be able to understand the manufacturer's written instructions, be suitably trained and be familiar with the safety procedures and regulations. Operators are forbidden to use the machine under the influence of alcohol or drugs that could affect his/her physical and mental capacity.

ESSENTIAL SAFETY CONDITIONS:

- Read and understand the information and instructions described in this manual.
- Have thorough knowledge of the features and characteristics of the machine.
- Keep unauthorized persons well clear of the working area.
- Make sure the machine is installed in compliance with all relevant standards & regulations in force.
- Ensure machine operators are suitably trained, capable of using the machine correctly & safely and are adequately supervised during work.
- Do not touch any electrical lines and/or the inside of electric motor(s) or any other electrical equipment before making sure the unit has been powered off.
- Read this manual carefully and learn how to use the machine correctly and safely.
- Always keep this user manual in a place where it can be readily available for reference.

WARNING

Do not remove or deface the **DANGER, CAUTION, WARNING, or INSTRUCTION Decals**. Replace any missing or illegible decals. If any decals have become detached or damaged, contact the dealer or distributor to obtain replacements.

Observe the unified industrial accident prevention regulations relating to high voltages and rotating machinery whenever the machine is in use or being serviced.

Any unauthorized changes or modifications made to the machine automatically release the manufacturer from any liability in the case of damage or accidents resulting from such changes or modifications.

WARNING



WEAR PROTECTIVE GLOVES



READ OPERATION MANUAL



WEAR PROTECTIVE GLASSES



POWER OFF THE ELECTRICAL SOURCE OF MACHINE DURING MAINTENANCE

MEANING OF SYMBOL DECALS:



LIGHTNING SYMBOL: POSITIONED ON THE BACK OF MACHINE, INDICATES POWER SUPPLY CABLE, AND WARNS THE USER TO PAY ATTENTION TO HIS SAFETY.



GROUNDING SYMBOL: POSITIONED ON THE REAR LEFT SIDE OF THE MACHINE, INDICATES WHERE TO CONNECT THE GROUND WIRE.

SAFETY DECALS & INSTRUCTIONS:



ELECTRICAL SHOCK



**DO NOT PLACE ANY PART OF YOUR BODY UNDER THE
DEMOUNT TOOL.**



**WHEN BREAKING TIRE BEAD, THE BEAD BREAKING BLADE WILL
QUICKLY MOVE TO THE LEFT.**



**WHEN PRESSING THE TIRE TO THE RIM, THE OPENED CLAMP
CYLINDER MAY CAUSE INJURY TO THE OPERATORS HAND. DO NOT
TOUCH SIDEWALL OF TIRE DURING PRESSING OPERATION.**

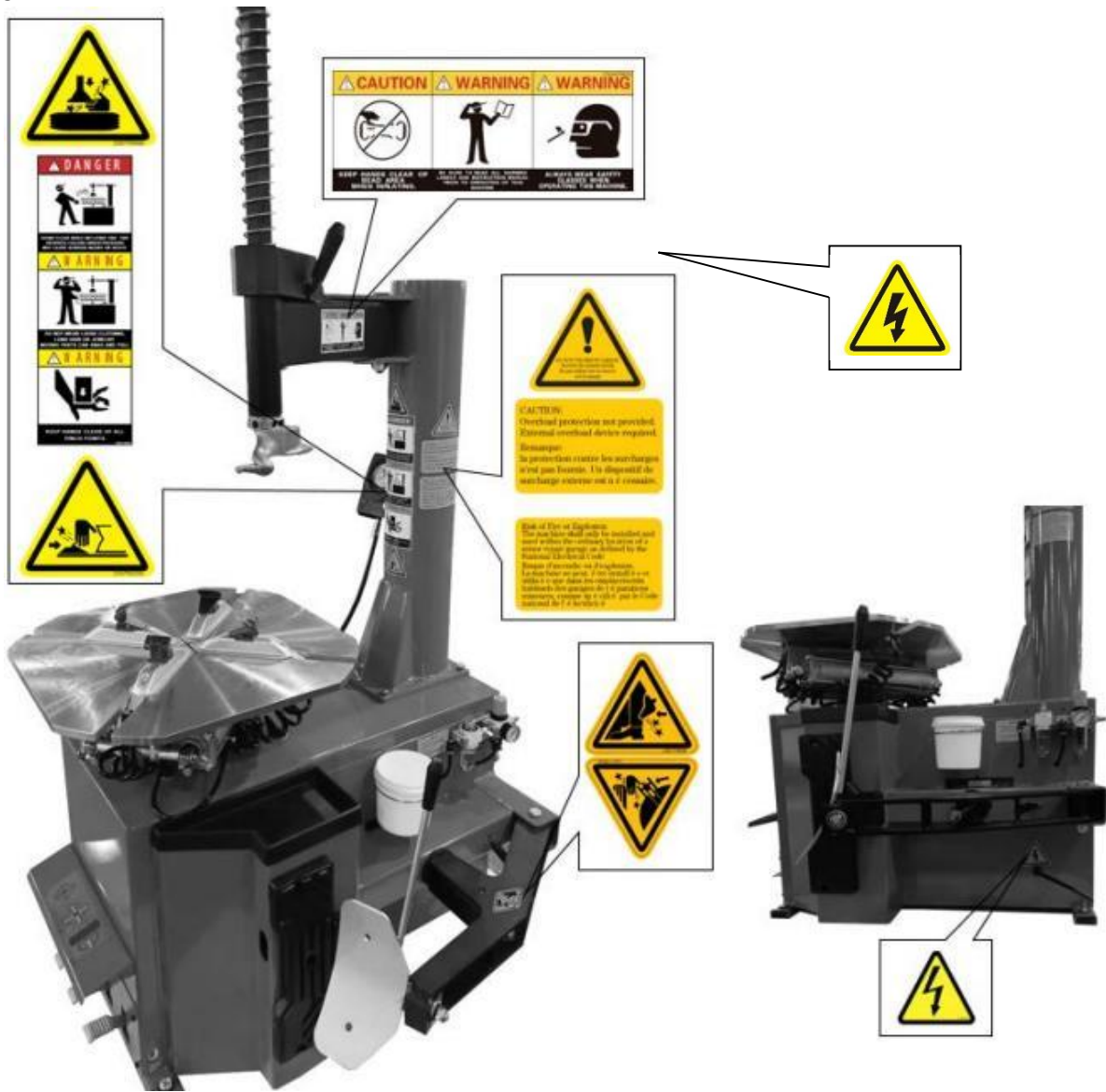


**WHEN CLAMPING THE RIM, DO NOT PLACE HAND OR OTHER PARTS OF THE BODY IN BETWEEN
THE CLAMP & THE RIM.**



DECALS LOCATIONS DIAGRAM:

Pay attention to keep the safety labels complete. When it is not clear of missing, you should change the new label(s). Operators should always note the safety labels to clearly understand the meaning of each label.



CERTIFICATION COMPLIANCES:

**TC-530-UL/CSA
TIRE CHANGER**



#E115745

CERTIFIED TO FOLLOWING STANDARDS

- **Garage Equipment:**
UL 201, 3rd Edition, Rev April 2023
- **Motor Operated Appliances / Household & Commercial:**
CSA C22.2 No. 68.18, 8th Edition, Rev May 2019

Tuxedo Distributors, LLC.

ELECTRICAL REQUIREMENTS:

The standard version of the machine must be connected to a mains **110V, 60HZ, 1PH, 17A**.

To complete the electric connection, apply the plug provided for in the user's country to the machine power supply cable. **30 Amp Circuit Breaker required.**



ALL OPERATIONS REQUIRED TO MAKE ELECTRICAL CONNECTION (HOWEVER SLIGHT) ON THE ELECTRICAL PARTS MUST BE CARRIED OUT BY QUALIFIED PERSONNEL.

Electrical cables must be sized according to the electrical power absorbed by the machine. The user must:

- Check that the supply voltage corresponds to the voltage indicated on the nameplate of the machine.
- Check the condition of wires and the presence of the ground conductor.
- Check that the machine is connected to its own electrical connection, fitted with a proper automatically shutting off device against over current, with 30 mA trip sensitivity (circuit breaker).
- Connect the power supply cable to the plug with the utmost care, in accordance with applicable regulations.



WHEN THE MACHINE IS OFF AND UNUSED FOR LONG PERIODS, IT IS NECESSARY TO DISCONNECT THE POWER SUPPLY PLUG TO PREVENT USE BY UNAUTHORIZED PERSONNEL.



IF CONNECTION TO THE ELECTRICAL LINE OCCURS DIRECTLY THROUGH THE GENERAL ELECTRICAL PANEL, WITHOUT THE USE OF ANY PLUG, IT IS NECESSARY TO SET UP A SWITCH TO RESTRICT USE EXCLUSIVELY FOR QUALIFIED PERSONNEL.



IN CASE OF OPERATIONS ON LINES, MOTOR INTERNAL PARTS OR ANY ELECTRIC EQUIPMENT, IT IS NECESSARY TO CUT OFF POWER FIRST.



DO NOT REMOVE WARNING, CAUTION & INSTRUCTION DECALS REMOVED OR DAMAGED STICKERS CAN BE SOURCED FROM THE DEALER OF THE MANUFACTURER.



ANY DAMAGE RESULTING FROM FAILURE TO COMPLY WITH THE ABOVE INSTRUCTIONS WILL NOT BE CHARGED TO THE MANUFACTURER AND MAY INVALIDATE THE WARRANTY.

2. INTENDED USE

This manual is an integral part of the product. Carefully read the Warnings, Cautions and Instructions contained in this manual as they provide important information about **SAFE USE** and **MAINTENANCE**.



KEEP THIS HANDBOOK WITH CARE NEAR THE MACHINE TO FACILITATE ANY CONSULTATION BY OPERATORS.

TECHNICAL DATA:

Model	Max. Wheel Diameter	Max. Wheel Width	Rim Diameter (Outer Clamp)	Rim Diameter (Inner Clamp)
TC-530-UL/CSA	960mm (37")	304mm (12")	10"~20"	12"~23"

- Operation Air Pressure: 8-10 bar (115 to 145 PSI)
- Motor: 60Hz 110V 1.1Kw (Standard)
- Turntable Speed: 6 RPM
- Noise: <70dB (A)

GENERAL SAFETY RULES:



THE TIRE CHANGER MUST BE USED EXCLUSIVELY FOR THE PURPOSE FOR WHICH IT HAS BEEN DESIGNED. ANY OTHER USE IS CONSIDERED INCORRECT AND UNREASONABLE.



THE TIRE CHANGER MAY BE USED BY AUTHORIZED, TRAINED PERSONNEL ONLY. DO NOT PUT ANY OBJECTS IN THE BASE WHICH MAY AFFECT THE CORRECT OPERATION OF THE TIRE CHANGER.



THE MANUFACTURER IS NOT RESPONSIBLE FOR ANY DAMAGE TO PEOPLE OR PROPERTY CAUSED BY UNAUTHORIZED PERSONNEL OR IMPROPER, INCORRECT AND UNREASONABLE USE OF THE TIRE CHANGER.



THE TIRE CHANGER SHOULD NOT BE MODIFIED OR TAMPERED WITH WITHOUT THE MANUFACTURER'S PERMISSION. ANY UNAUTHORIZED CHANGE MADE TO THE EQUIPMENT RELIEVES THE MANUFACTURER FROM ANY LIABILITY IN CASE OF DAMAGE ATTRIBUTABLE TO SUCH ALTERATIONS.



THIS MACHINE IS ONLY SUITABLE FOR CHANGING TIRES WITHIN THE SPECIFIED RANGE AND NOT FOR ANY OTHER PURPOSE. THE MANUFACTURER WILL NOT BE RESPONSIBLE FOR THE DAMAGE OR INJURY CAUSED FOR THE OPERATION NOT PROPERLY AND OUT OF THE RANGE.

3. TRANSPORT AND HANDLING

The tire changer is packaged in a wooden crate box, attached to a pallet. Transport and handling must be carried out **BY AUTHORIZED PERSONNEL ONLY**, using a **Pallet Jack** or **Forklift** and adopting appropriate safety measures.

- After making sure that the crate package of your machine is free of damages, transport and position the machine to the preferred installation location site, as shown in **Fig. 1**.



Fig. 1

UNPACKING:

- Remove the upper cover of the crate package and check and confirm the machine, spare parts, and documents you purchased according to the packing list. If you have any question, please contact with the dealer.
- Remove crate package side panels to gain access. Carefully, set aside side panels.
- Remove the connecting bolts securing machine to pallet, allowing to remove off pallet,
- Carefully position machine on a flat solid floor. Store indoors to avoid being exposed to sunlight or moisture.

 **CAUTION** DO NOT LIFT OR USE FORCE ON THE TURNTABLE OR TOWER!!

- After unpacking the various parts of the tire changer, ensure they are intact and check for any anomalies, then assemble the parts.

NOTE: IF THE MACHINE IS NOT CRATE PACKAGED, AND NEED TO BE RELOCATED, TAKE THE FOLLOWING PRECAUTIONS:



PROTECT SHARP EDGES AT THE ENDS WITH SUITABLE MATERIAL, LIKE BUBBLE-WRAP OR CARDBOARD.



DO NOT USE METAL WIRE ROPES FOR LIFTING.



SLING WITH STRAPS OF AT LEAST 79" (200 CM) IN LENGTH AND WITH A GREATER CAPACITY THAN 6,500 LBS. (3000 KG).

 **CAUTION** DO NOT LIFT OR USE FORCE ON THE TURNTABLE OR TOWER!!

 **CAUTION** ALWAYS UNPLUG THE POWER SUPPLY CABLE FROM THE SOCKET BEFORE MOVING THE MACHINE.

 **CAUTION** THE PACKAGING MATERIALS (PLASTIC BAGS, EXPANDED POLYSTYRENE, NAILS, SCREWS, PIECES OF WOOD, ETC.) MUST NOT BE LEFT WITHIN REACH OF CHILDREN AS THEY ARE POTENTIALLY DANGEROUS.

- Discard packaging materials to the appropriate collection points based on state & local regulations.



MAKE SURE YOU HAVE NOT THROWN AWAY THE ACCESSORY BOX WITH THE PACKAGING.

4. CONFIGURATION AND FUNCTION

CONFIGURATION:

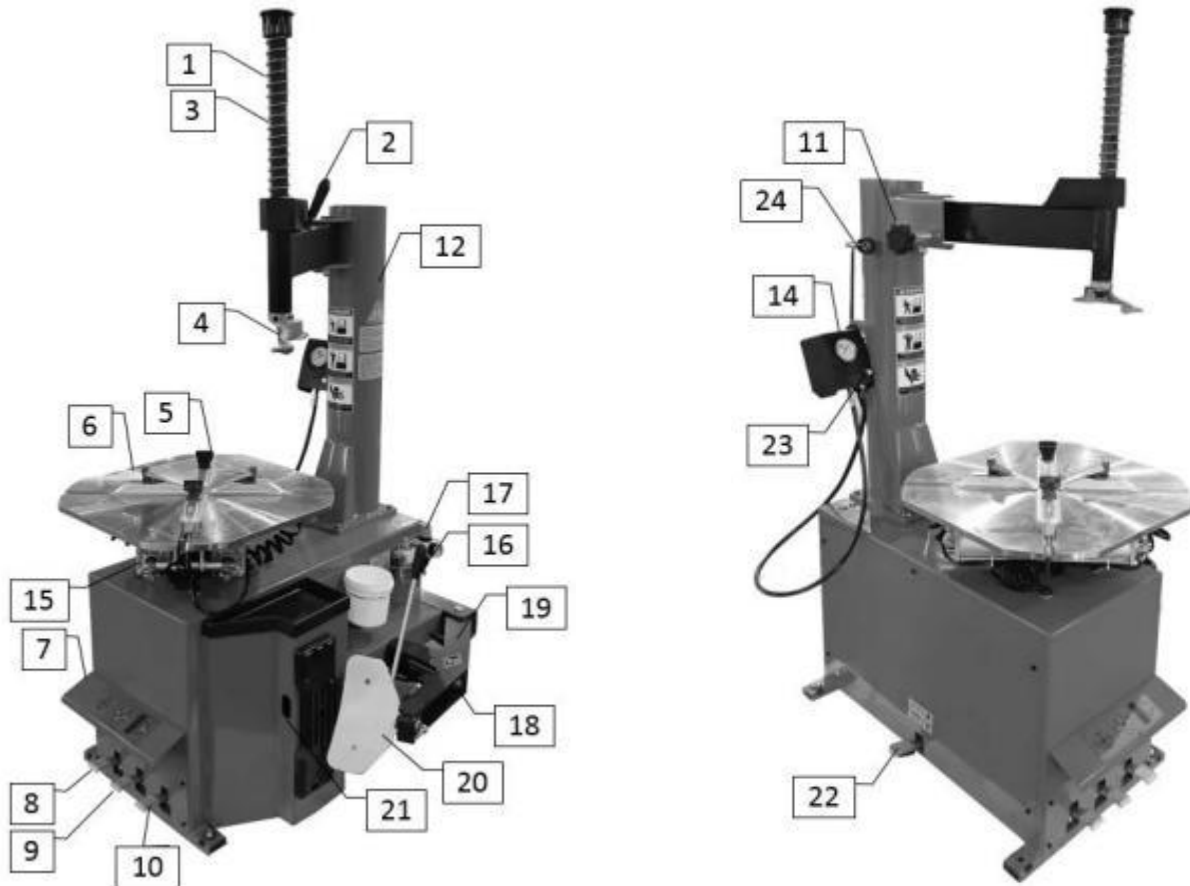


Fig. 2

ITEM & DESCRIPTION	ITEM & DESCRIPTION
1. Vertical Shaft Spring	14. Air Inflater & Gauge Cover Assembly
2. Locking Handle	15. Clamp Cylinder Assembly
3. Hexagon Shaft	16. Bead Breaker Handle
4. Demount Head Assembly	17. Air Regulator Assembly
5. Clamp Jaw	18. Bead Breaker Cylinder
6. Turntable	19. Bead Breaker Arm
7. Operation Label	20. Bead Breaker Blade
8. Turntable Rotation Control Pedal	21. 20+Crowbar / Tire Tool
9. Clamp Control Pedal	22. Inflation Pedal Assembly
10. Bead Breaker Control Pedal	23. Exhaust Valve Assembly
11. Limit Handle	24. Tank Pressure Gauge Assembly
12. Column / Air Tank	

5. INSTALLATION

BRIEF INTRODUCTION:

This series of equipment is the tire changer with fixed column and rocker arm tire changer. It is suitable to mount, demount and inflate all types of motorcycle tire with tube & tubeless. The operation is easy, convenient, safe, and dependable. It is the necessary equipment for the auto service shop and tire shop.

- Ensure to install the machine based on the calculated work area diagram requirements for proper safety & operation. **Fig. 3.**

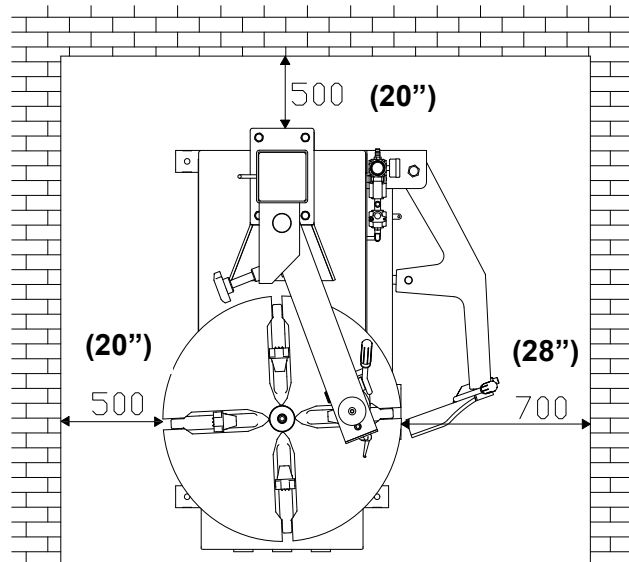


Fig. 3



IF THE TIRE CHANGER IS INSTALLED OUTDOORS, YOU MUST HAVE A PROTECTIVE TYPE SHED OR COVER TO PROTECT FROM RAIN AND SUN.



IT IS PROHIBITED TO USE NEAR FLAMMABLE GASES!



BEFORE INSTALLATION, CAREFULLY READ THE MANUAL. ANY UNAUTHORIZED MODIFICATIONS AND/OR CHANGES TO ANY PARTS AND/OR COMPONENTS OF THE TIRE MACHINE MAY CAUSE DAMAGE TO THE MACHINE.

REQUIRED TOOLS:

- Adjustable Wrenches
- Socket Wrenches
- Hex Keys
- Pliers
- Screw Driver & Hammer
- Multi-Purpose Meter

ASSEMBLY:

1. After un-packaging the package carton, take out Accessory Boxes (FIG 4-3), Inflater Cover Assembly (FIG 4-4) and Column Assembly (FIG 4-2). Position the body according to the FIG1.4. Place the box (FIG 4-1) in the installation position of the machine and remove the bolts and matching flat and spring washers from the box (FIG 5).



FIG. 4



FIG. 5



FIG. 6

2. Place the column on the body. (The direction of the warning label is forwards.) Make the holes on the column base plate align to thread holes on the body. Reassemble the removed bolts & washers to secure column to body. Torque bolts to 52 ft.-lbs (FIG 6) using a torsion wrench.



BE CAREFUL NOT TO DAMAGE THE PIPE CONNECTOR AT THE LOWER END OF THE COLUMN.



3. Release locking handle (FIG 2) Push the hexagonal shaft to the highest position and lock handle (FIG 7). Remove the vertical shaft cap (FIG 8).



WHEN REMOVING THE SCREW ON THE VERTICAL SHAFT CAP, YOU WILL NEED USE THE LOCK HANDLE TO LOCK THE HEXANGULAR SHAFT TO AVOID SLIDING OFF TO DAMAGE THE MACHINE OR CAUSE INJURY TO PERSONNEL!

4. Take out the vertical shaft spring from the accessory box, put the vertical shaft spring on the hexagonal shaft, and install the vertical shaft cap (FIG 9).

5. Take out the limit handle (FIG 2-11) from the accessory box, install it into the threaded hole of the column (FIG 10).



FIG. 7



FIG. 8



FIG. 9

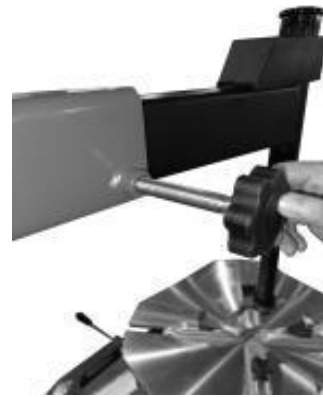


FIG. 10

6. Take out the pressure gauge assembly from the accessory box (FIG 2-24), put the rubber into the column hole (FIG 11), install the pressure gauge assembly on the column, adjust the pressure gauge to the horizontal position, and tighten the nut (FIG 12).



FIG. 11



FIG. 12



FIG. 13



FIG. 14

7. Remove the two hex socket screws on the column (FIG. 13), take out the inflator cover assembly (FIG. 4-4), and then take out the back cover of the inflator from the accessory box.
8. Install the rear cover of the inflation box on the inflation box (FIG. 14), install the inflation box on the column (FIGS. 15 & 15-1), and insert the air source tube of the inflation box into the air joint behind the box. (FIG. 16).



FIG 15



FIG 15-1

9. Remove the side panel (FIG. 16), insert the two 12 air source tubes inside the box into the two air joints at the lower end of the column (FIG. 17), and reinstall the side panel.



FIG. 16



FIG. 17

10. Take out the wire retainer ring and grease container from the accessory box, install the support on the side (FIG. 18), place the box in the support (FIG. 19).



FIG. 18



FIG. 19

11. Air Regulator has been pre-adjusted before ex-factory. If it needs adjusting, adjust as follows:
Pressure: Lift up the pressure adjustable button (FIG. 20-1) and twist clockwise and the air pressure will increase. If twisting counterclockwise, the air pressure will decrease.
12. Oil Feed: Use screw driver to twist the screw (FIG 20-2). If turning clockwise, the oil drip speed will slow. If counterclockwise, it will become fast.

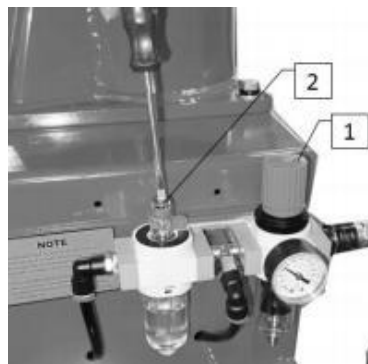


FIG. 20

6. DEMOUNT AND MOUNT TIRE

DEMOUNT TIRE:

1. Deflate the tire completely by pulling out the valve stem and/or core. Use a special tool (Wheel Balancer Hammer) to remove balance weights from the rim (FIG. 21).



ALL WEIGHTS MUST BE REMOVED FROM RIM BEFORE REMOVAL!



BEFORE REMOVING THE TIRE, THE AIR INSIDE THE TIRE MUST BE DRAINED AND REMOVE THE VALVE CORE.

2. Place deflated tire between the bead breaking blade and rubber contact pad (FIG. 2-20). Then step down on the Bead Breaker Pedal (FIG. 21) to detach the rim from the tire. Repeat the same operation on the other sections of the tire to fully detach from the rim.



TO DETACH THE LIP SMOOTHLY, YOU CAN USE THE BRUSH TO SPREAD THE LUBRICANT OR THICK SOAP LIQUID BETWEEN THE LIP AND RIM.

3. Place the wheel with the tire detached from the rim on the turntable and step on the Clamp Pedal (FIGS. 2-9 & 22) to clamp the rim.



YOU CAN SELECT EITHER THE OUTER CLAMPING OR INNER CLAMPING TO PROPERLY CLAMP THE WHEEL ACCORDING TO DIFFERENT RIM TYPES.



FIG. 21



FIG. 22



FIG. 23



FIG. 24

4. Position the Hexangular Shaft (FIG. 23) to the working position to situate the demount tool to be close to the rim of the wheel, along with using the Limit Handle Knob (FIG. 23) to position and secure Hex Shaft to rim. Once properly positioned, secure using Lock Handle.



THE DEMOUNT TOOL WILL AUTOMATICALLY PROVIDE A SMALL 2MM GAP TO THE RIM (FIG. 23).



THE ANGLE OF THE DEMOUNT TOOL HAS BEEN CALIBRATED ACCORDING TO THE STANDARD RIM OF 13". IF HANDLING THE EXTRA-BIG OR EXTRA-SMALL RIM, YOU CAN REPOSITION.

5. Use the included Crowbar Tire Tool to detach tire from rim as shown in FIG 24, using the Hex Shaft as a pivot point.



IF HANDLING A TUBED TIRE, TRY TO AVOID THE DAMAGE TO THE TUBE, AS THE OPERATOR SHOULD KEEP THE VALVE STEM 4” (10CM) FROM THE RIGHT SIDE OF THE DEMOUNT TOOL WHEN DEMOUNTING TIRES.



FIG. 25



FIG. 26



FIG. 27

6. Once the Crowbar is positioned, then step on the Turntable Pedal (FIG. 2-8) to rotate the turntable clockwise until the entire tire lip is completely detached from rim FIGS 26 & 27.



IF THE DEMOUNTING OF THE TIRE GETS JAMMED, PLEASE STOP THE MACHINE IMMEDIATELY AND THEN LIFT UP THE PEDAL TO LET THE TURNTABLE ROTATE COUNTER-CLOCKWISE TO REMOVE THE RESISTANCE!



WHEN HANDLING THE TUBED TIRE, TAKE OUT THE TUBE AND THEN MOVE THE LOWER LIP UPWARDS TO THE UPPER EDGE OF THE RIM AND THEN REPEAT THE ABOVE STEPS TO DETACH THE OTHER LIP.



IN THE PROCESS OF DEMOUNTING TIRE, YOU SHOULD KEEP YOUR HANDS AND THE OTHER PARTS OF YOUR BODY FROM THE MOVABLE PARTS. ANY NECKLACES, BRACELETS AND/OR LOOSE CLOTHING CAN CAUSE INJURY TO PERSONNEL!



IN THE PROCESS OF DEMOUNTING TIRE, YOU SHOULD KEEP YOUR HANDS AND THE OTHER PARTS OF YOUR BODY FROM THE MOVABLE PARTS. ANY NECKLACES, BRACELETS AND/OR LOOSE CLOTHING CAN CAUSE INJURY TO PERSONNEL!

MOUNT TIRE:



BEFORE MOUNTING A TIRE, ENSURE TO CHECK IF THE TIRE AND RIM ARE OF THE SAME DIMENSION!

1. Clean the dirt and rust from the rim and position on the turntable. Secure rim to turntable using the clamps.

2. Spread the lubrication liquid or soap liquid around the lip of tire. Tilt the tire against the rim, keeping the front end upwards. Press down on the hexangular shaft to move the demount tool arm to contact with the rim and lock.
3. The left lip above the tail of the demount tool and the right lip will be positioned under the front end of the demount tool (Fig. 21). Then, rotate the turntable clockwise to guide the bottom lip into the tire detaching slot (FIG 28).



FIG. 28



FIG. 29



FIG. 30

4. If there is tube, place it in the tire and plug the core and assemble the lip according to the above mentioned step.
5. Adjust the position of the upper tire so that the tire is above the tail and the other end is below the fluck headq(FIGS. 29 & 30). Step on the Control Pedal (FIG 2-8) to rotate the turntable clockwise until the upper tire is fully installed inside the rim.

7. TIRE INFLATION



WHEN INFLATING THE TIRE, PLEASE BE CAREFUL AND FOLLOW THE OPERATIONAL PROCESS. ENSURE TO CHECK THE AIR ROUTING TO SEE IF THE AIR CONNECTION IS PROPERLY ATTACHED.



THE TIRE CHANGER IS EQUIPPED WITH AN INFLATION PRESSURE GAUGE TO MONITOR THE INFLATION OF THE TIRE AND THE TIRE'S PRESSURE.

1. Loosen the tire from the turntable.
2. Connect the inflation hose with the tire's preinstalled valve stem.
3. In the process of inflation, you should stop the inflation periodically to confirm the pressure indicated on the pressure gauge so not to exceed the tire's pressure as specified by the manufacturer. The pressure decrease valve equipped in the machine will make the air pressure to not exceed 3.5bar or 51psi. The customer can obtain different inflation pressures by adjusting the regulator's pressure according to the requirement.
4. If the inflation pressures are too high, you can press down on the deflation button on the inflation device to reach the required air pressure.

RAPID INFLATION:



IF THE TUBELESS TIRE DOES NOT FIT SECURELY TO THE RIM, YOU CAN FIRST APPLY 'RAPID INFLATION' BY USING THE BEAD SEATING INFLATION JETS INTEGRATED INTO THE CLAMPS AND THEN USE COMMON INFLATION METHOD.

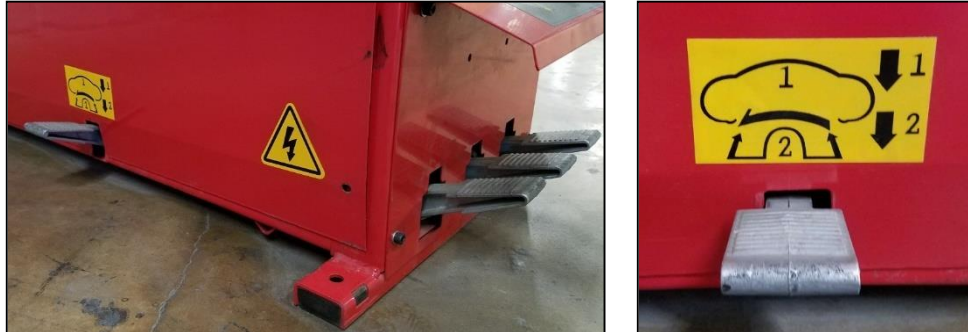


FIG. 31

1. Clamp the wheel and connect the inflation hose.
2. Step down the Inflation Pedal to the lowest position (2) and quickly release the pedal when the tire is full to the upper position (1) as shown above in Fig 24.
3. Repeat stepping on the Inflation Pedal multiple times to confirm the pressure indicated on the pressure gauge does not exceed the pressure specified by the tire manufacturer.



DURING THE INFLATION PROCESS, YOU SHOULD ALWAYS ENSURE THE WHEEL HAS BEEN TIGHTLY CLAMPED!



EXPLOSION WARNING!

WHEN INFLATING, PLEASE FOLLOW THE FOLLOWING INSTRUCTIONS:

- Carefully check that the tire and the rim are of the same dimension.
- Check the wear condition of the tire to confirm the tire is not damaged before inflation!



WHEN INFLATING THE TIRE, PLEASE BE CAREFUL. KEEP YOUR HANDS AND BODY AWAY FROM THE TIRE.

PREVENTIVE MAINTENANCE & REPAIR

SUSPENSION OF USAGE:

Should the machine not be used for long periods, disconnect the power supply, and protect all parts that could be damaged by dust. Grease all parts that could be damaged in case of oxidation. In this specific case, protect the shaft and flange.

ENVIRONMENTAL INFORMATION:



THE DISPOSAL PROCEDURE DESCRIBED BELOW ONLY APPLIES TO MACHINES WITH THE SYMBOL OF THE CROSSED-OUT WHEELIE BIN ON THEIR DATA PLATES.



The crossed-out wheelie bin symbol, placed on the product and on this page, reminds the user that the product must be disposed of properly at the end of its life. This product may contain substances that can be hazardous to the environment and to human health if it is not disposed of properly. We are therefore providing you with the information below in order to prevent these substances from being released into the environment, and to improve the use of natural resources. Electrical and electronic equipment must never be disposed of in the usual municipal waste but must be separately collected for proper treatment.

Thus, the hazardous consequences that non-specific treatments of the substances contained in these products, or improper use of parts of them, may have on the environment or on human health are prevented. Furthermore, this helps to recover, recycle, and reuse many of the materials contained in these products. For this purpose, electrical and electronic manufacturers and distributors set up proper collection and treatment systems for these products.

At the end of the product service life, contact your supplier for information about disposal procedures.

When you purchase this product, your supplier will also inform you that you may return another worn-out appliance to him free of charge, provided it is of the same type and has performed the same functions as the product just purchased.

Any disposal of the product performed in a different way from that described above will be liable to the penalties provided for by the national regulations in force in the country where the product is disposed of.

We also ask you to adopt other environmentally friendly measures: recycle the internal and external packaging that the product comes in, and suitably dispose of used batteries (only if contained in the product).

Your help is critical to reduce the amount of natural resources used for manufacturing electrical and electronic equipment, minimize the use of landfills for product disposal and improve the quality of life, preventing potentially hazardous substances from being released into the environment.

ROUTINE MAINTENANCE & CLEANING:

To correctly use the tire changer and prolong its working life, it is necessary to periodically provide maintenance and repairs according to the instruction manual. If maintenance and/or repairs are not done, there is a possibility the operation and reliability of the machine may be affected, along with possible injury to operator.



CLEANING AND ORDINARY MAINTENANCE MUST BE PERFORMED BY AUTHORIZED PERSONNEL IN ACCORDANCE WITH THE MANUFACTURER'S INSTRUCTIONS PROVIDED BELOW.

MAINTENANCE & ADJUSTMENT:



Only a qualified technician can execute the maintenance on the tire changer. Before any maintenance is performed, shut off power.



Ensure to shut off the air supply and push the air supply switch to the off position and completely deflate the residual air in the machine.

MONTHLY MAINTENANCE:

- Keep tire changer and working area clean.
- Clean hexangular shaft (**Fig. A**). Use machine oil to lubricate the shaft.
- Clean turntable, clamps and demount head. Use lithium based oil to lubricate (**Fig. B**).
- Check the oil level on the FRL. If the oil level is low, add SAE-30 lubrication oil to fill line as required (**Fig. C**). Check the oil water separator trap and drain water, as required.



Fig. A

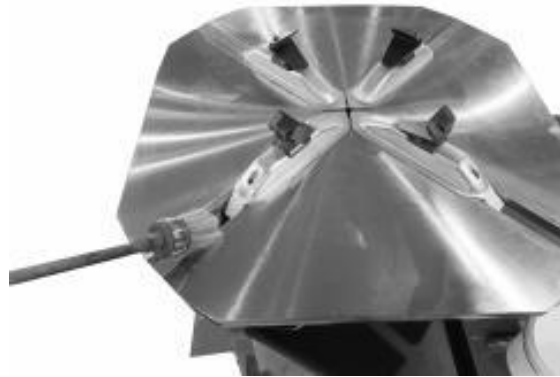


Fig. B



Fig. C

- Periodically check and adjust the tension of the drive belt. Properly adjust by adjusting the nut in A and B to proper tension (**Fig. D**).
- Check all connection parts and tighten, as required.

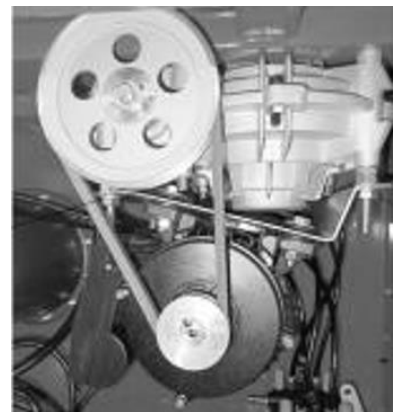


Fig. D

HEXANGULAR SHAFT & LOCK PLATE GAP ADJUSTMENT:

When pressing downward on the lock handle, the hexangular shaft will easily slide up & down vertically due to the weight of the hexangular shaft and the return spring.

When the lock handle is rotated clockwise about 100 degrees, the cam connected to the handle will push up on the lock plate to lock the hexangular shaft into position. The gap distance can be increased or decreased by adjusting the adjustment nut (**Fig. E**).

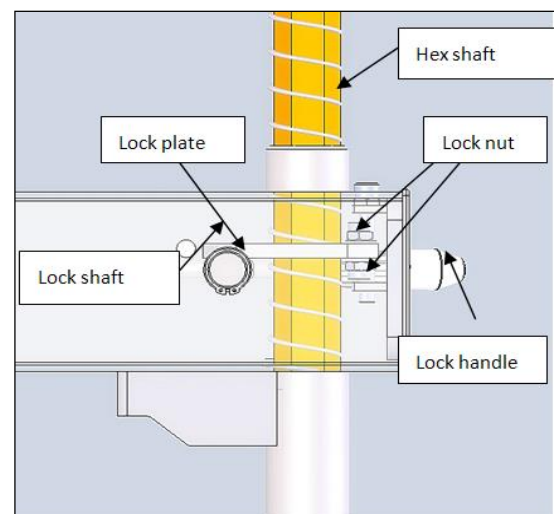
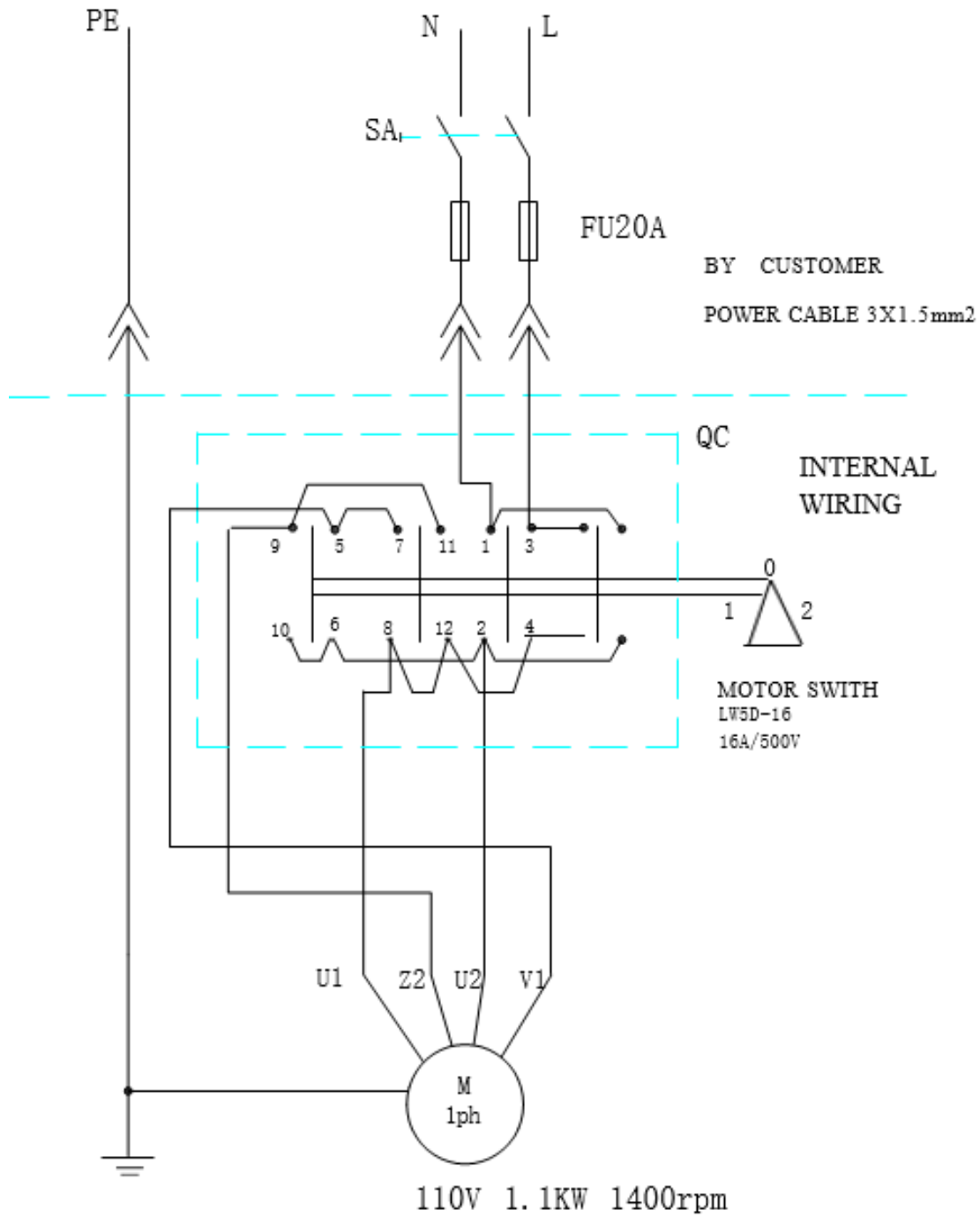


Fig. E

APPENDIX'S

APPENDIX 1 - ELECTRICAL DIAGRAM:



TIRE CHANGER 1-PHASE MOTOR(110V) WIRING
DRAWING (UNIVERSAL)

GENERAL PROTECTION & TROUBLESHOOTING SOLUTIONS

FIRE PROTECTION EQUIPMENT TO BE USED:

(Type)	Dry Materials	Flammable Liquids	Electrical Equipment
Water	YES	NO	NO
Foam	YES	YES	NO
Powder	YES*	YES	YES
CO ₂	YES*	YES	YES

YES*: CAN BE USED IN THE ABSENCE OF MORE APPROPRIATE MEANS OR FOR SMALL FIRES.



The information in the table above is general and can be used as a rough guide. For the responsibility for the use of each type of extinguisher, refer to the manufacturer.

TROUBLESHOOTING & SOLUTIONS:

DESCRIPTION	CAUSE	SOLUTION(S)
Turntable Rotates only in one Direction	1. Universal switch defective.	1. Change Universal switch.
Turntable Does Not Rotate	1. Belt damage 2. Belt too loose 3. Motor or power source have problems 4. Universal switch contact damage	1. Change belt. 2. Adjust the tension of the belt. 3. Check motor, power source and power cord. 4. Change motor if motor burned or Change Universal switch
Turntable Can Not Clamp the Rim Normally	1. Clamp claw worn 2. Clamp cylinder air leakage	1. Change claws 2. Change and/or seal parts that leak air.
Hexangular Shaft will Not Lock	1. Lock plate not in position	1. Refer to Page 25
Operation Pedals will Not Return to Normal Position	1. Pedal return spring damage	1. Change torsion spring
Motor will Not Rotate or Output Torque is Not Sufficient	1. Drive system jam 2. Capacitor failure 3. Voltage not sufficient 4. Short-circuit internal defect	1. Remove the jam 2. Change capacitor 3. Wait for the restore of the voltage 4. Remove & replace
Cylinder Output Force Not Enough	1. Air leakage 2. Air pressure too low	1. Change sealing parts 2. Adjust the air pressure to meet the requirement
Air Leakages	1. Air hose broken Pipe fitting broken Defective pneumatic component 2. Lack of sealant	1. Change broken parts. 2. Apply sealant, as required.

ADDITIONAL INFORMATION:

MACHINE OIL SAFETY DATA INFO:

MOBIL XHP 222

ITEM	QUALITY STANDARD
Penetration rate 25°C mm/10	280
Dropping point °C	280
Anti-corrosion	Passed
Basic oil viscosity	220
Oxidize stability 100h pressure-drop Kpa	35
Water lose percentage 79%	5
Copper Corrosion	1A

SAE30# LUBRICATION OIL

ITEM	QUALITY STANDARD
Density 15°C	0.893
Flash point	224
Pour point °C	-18
Viscosity 40°C	100
Viscosity 100°C	11.2
Viscosity index	97

2# LITHIUM BASE GREASE

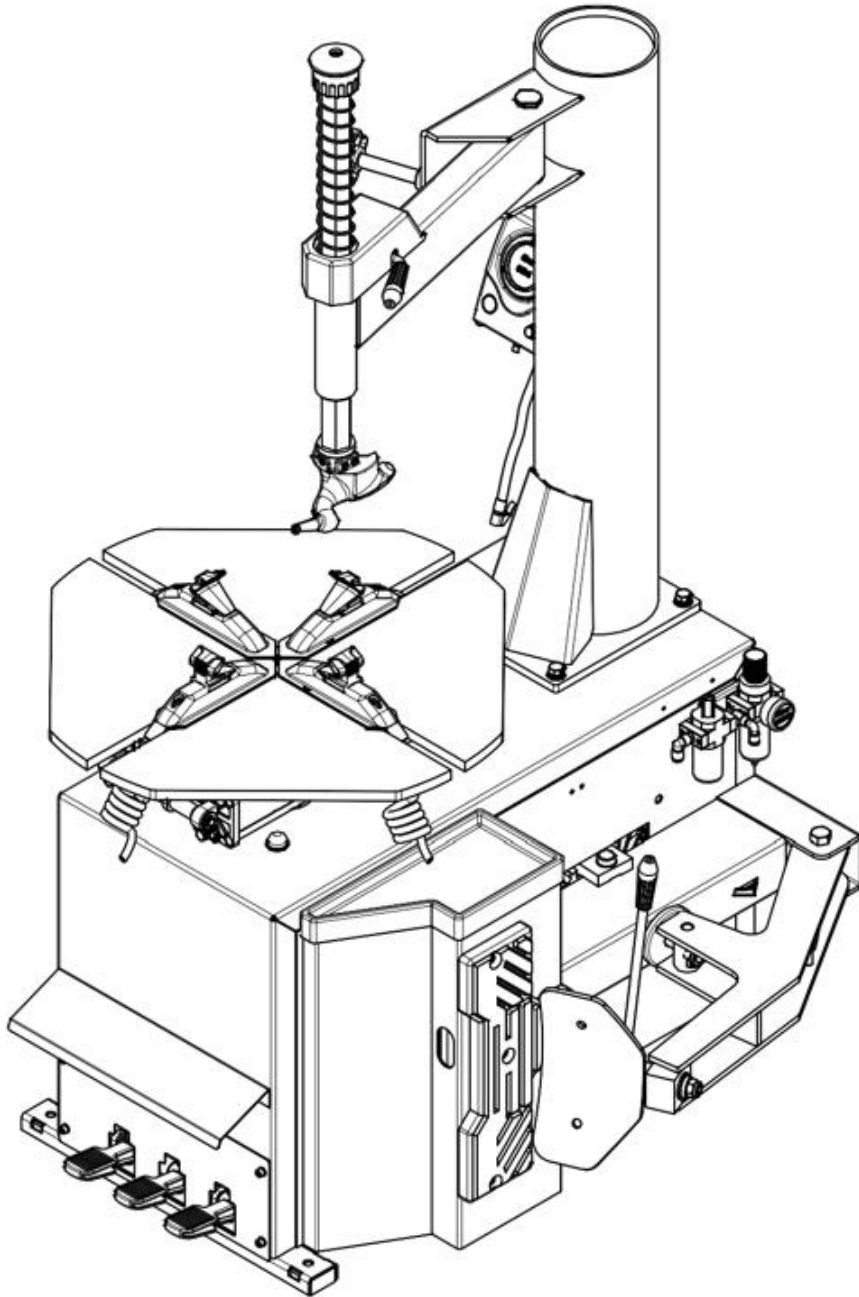
ITEM	QUALITY STANDARD
Penetration rate MM / 10	278
Dropping point °C	187
Copper corrosion (100°C 24h)	No Change
Oxidize stability (99°C 100h)	0.2
Anticorrosion (52°C 48h)	1 level
Similar viscosity (-15°C、10S ¹) /(Pa S)	800
Water Lose (35°C 1h) %	8

CKC460 INDUSTRIAL GEAR OIL

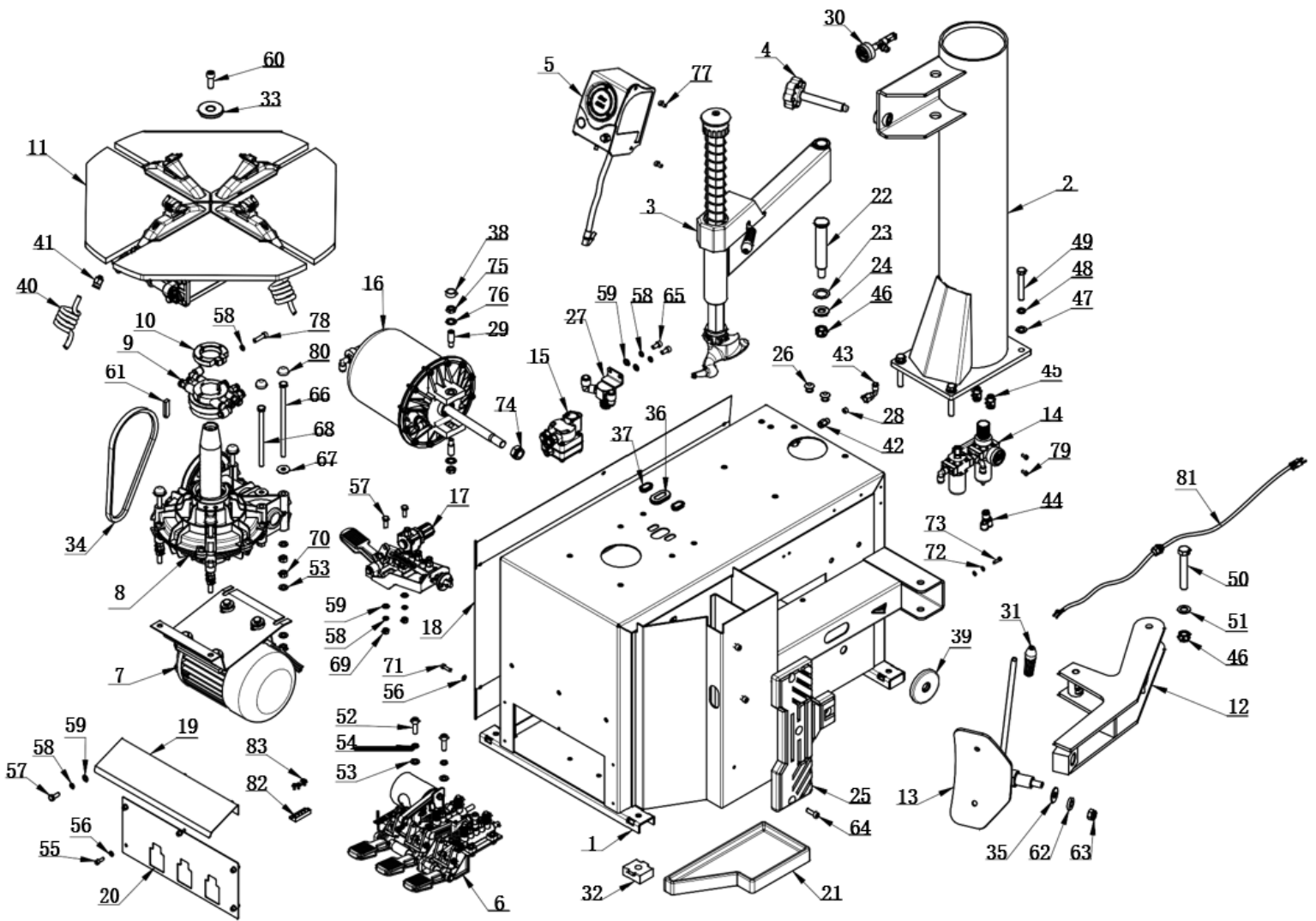
ITEM	QUALITY STANDARD
Viscosity 40°C	461
Viscosity index	92
Flash point °C	212
Freezing point °C	-26
Copper corrosion (100°C 3h)	1A
Mechanical impurity	0.007
Pour point	-10

EXPLODED VIEWS & PARTS LISTS

TC-530-UL/CSA



REV 2024-A01

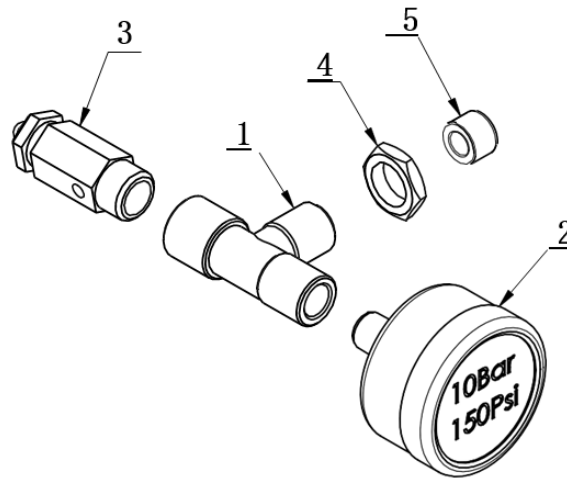


ITEM	PART NO.	DESCRIPTION	QTY
1	C-31-1100000UL	BODY	1
2	C-31-1200000	VERTICAL COLUMN	1
3	C-31-1300000	SWING ARM	1
4	C-54-1400000	HANDLE WHEEL	1
5	CT-K-3100000	INFLATOR COVER ASSEMBLY	1
6	CT-D-9100000	PEDAL ASSEMBLY	1
7	CT-DJ-0211212UL	MOTOR(110V,60Hz,1P,1.1Kw)	1
8	CT-J-2100000	GEARBOX ASSEMBLY (USED WITH 60HZ MOTOR)	1
9	CT-Q-4000000	ROTATING UNION	1
10	CT-Q-6000000	CLAMP RING	1
11	CT-Y-2100000	TURNTABLE ASSEMBLY	1
12	CT-B-3000000	BEAD BREAKER	1
13	CT-C-2100000	BEAD BREAKER BLADE	1
14	CT-F-3121100	AIR REGULATOR ASSEMBLY	1
15	CT-K-2200000S	QUICK EXHAUST VALVE ASSEMBLY	1
16	CT-LS-2600000	BEAD BREAKER CYLINDER ASSEMBLY	1

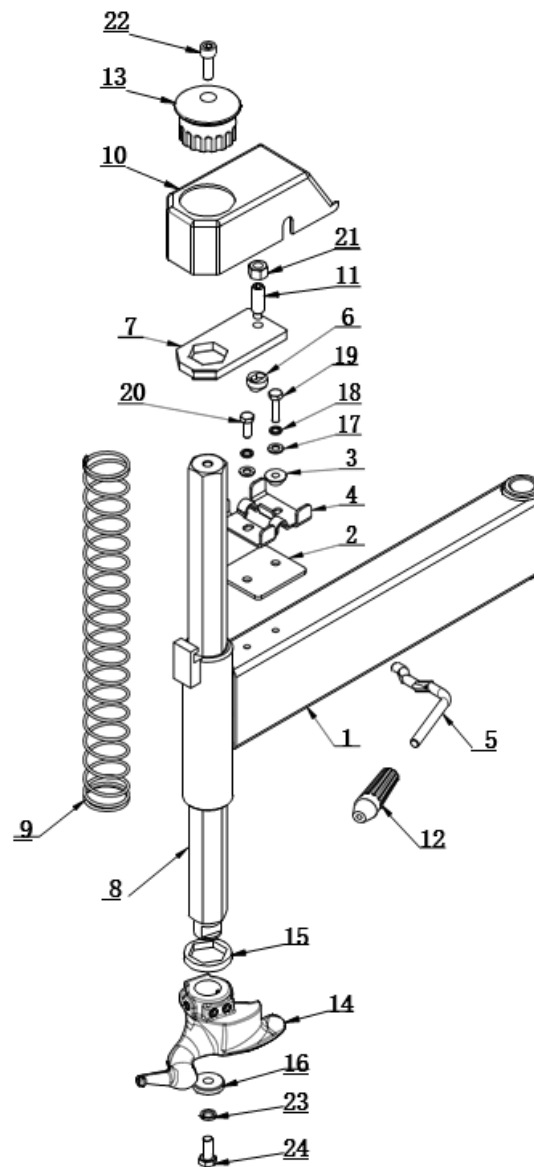
17	CT-K-1C00000	INFLATION PEDAL ASSEMBLY	1
18	C-31-1000001	SIDE PANEL	1
19	C-31-1000002	PROTECTION COVER	1
20	C-31-1000003A	BLOCK PLATE FOR PEDAL	1
21	C-31-1000004	TOOL BOX	1
22	C-31-1000005	VERTICAL SHAFT	1
23	C-31-1000007	ADJUSTING WASHER	1
24	C-71-1000010	WASHER	1
25	C-31-1000010	RUBBER PAD PLATE	1
26	C-71-1000020	STOP-UP	2
27	C-54-1000014S	VALVE CONNECTOR ASSEMBLY	1
28	C-54-1000027	JOINT SEALING GASKET	1
29	C-54-1000010	SCREWS M14x42	2
30	C-54-0002000	PRESSURE GAUGE ASSEMBLY	1
31	TC-40-1200022	RUBBER COVER	1
32	C-54-1000005	RUBBER FOOT	4
33	C-54-1000012	PRESS COVER	1
34	CT-DJ-0000008	BELT (USED WITH 60HZ MOTOR)	1
35	C-54-1000002	WASHER	1
36	C-54-1000028	PLUG B	1
37	C-54-1000022	PLUG C	2
38	C-54-1000013	SEALED COVER	1
39	C-54-1000016	RUBBER WASHER	1
40	C-54-1000029	PU SPIRAL TUBE	4
41	FPC 10-01	MALE STRAIGHT	4
42	FPC 8-02	MALE STRAIGHT	1
43	FPLF 8-02	FEMALE ELBOW	1
44	FPY-8	Y-SHAPE INSERT FITTING 8	1
45	FPC 12-03	MALE STRAIGHT	2
46	GB889.1-M16	1-TYPE TORQUE TYPE HEX LOCK NUT	2
47	GB95-12	FLAT WASHER	4
48	GB93-12	STANDARD SPRING WASHER	4
49	GB5782-M12x75	HEX BOLT	4
50	GB5782-M16x100	HEX BOLT	1
51	GB95-16	FLAT WASHER	1
52	GB70.1-M10x30	INNER HEX CYLINDRICAL SCREW	2
53	GB95-10	FLAT WASHER	16
54	GB93-10	STANDARD SPRING WASHER	2
55	GB70.1-M6x16	INNER HEX CYLINDRICAL SCREW	5
56	GB95-6	FLAT WASHER	10
57	GB5783-M8x20	HEX BOLT	5
58	GB93-8	STANDARD SPRING WASHER	8
59	GB95-8	FLAT WASHER	7
60	GB70.1-M12x30	INNER HEXA CYLINDRICAL SCREW	1
61	GB1096-C12x8x45	COMMON FLAT KEY	1
62	GB955-14	WAVE-FORM SPRING WASHER	1
63	GB889.1-M14	1-TYPE TORQUE TYPE HEX LOCK NUT	1

64	GB70.1-M8x25	INNER HEX CYLINDRICAL SCREW	4
65	GB70.1-M8x16	INNER HEX CYLINDRICAL SCREW	2
66	GB5782-M10x200-8.8	BOLT M10x200	4
67	GB96.1-10	LARGE WASHER A GRADE	6
68	GB5782-M10x160-8.8	BOLT M10x160	2
69	GB41-M8	HEX NUT	5
70	GB41-M10	HEX NUT	14
71	GB70.1-M6x20	INNER HEX CYLINDRICAL SCREW	5
72	GB95-5	FLAT WASHER	2
73	GB5783-M5x16	HEX BOLT	1
74	GB889.2-M18x1.5	NUT M18x1.5	1
75	GB6172.1-M14	HEX THIN NUT	2
76	GB861.1-14	INNER TOOTH LOCK WASHER	2
77	GB70.1-M6x12	INNER HEX CYLINDRICAL SCREW	2
78	GB70.1-M8x30	INNER HEX CYLINDRICAL SCREW	1
79	GB70.1-M5x10	INNER HEX CYLINDRICAL SCREW	2
80	C-01-1000006	COVER CAP	6
81	CT-E-US003UL	CABLE (1P)	1
82	TC-E-7400001	EARTHING TERMINAL	1
83	GB9074.4-M4x10	COMBINATION SCREW	4

C-54-0002000



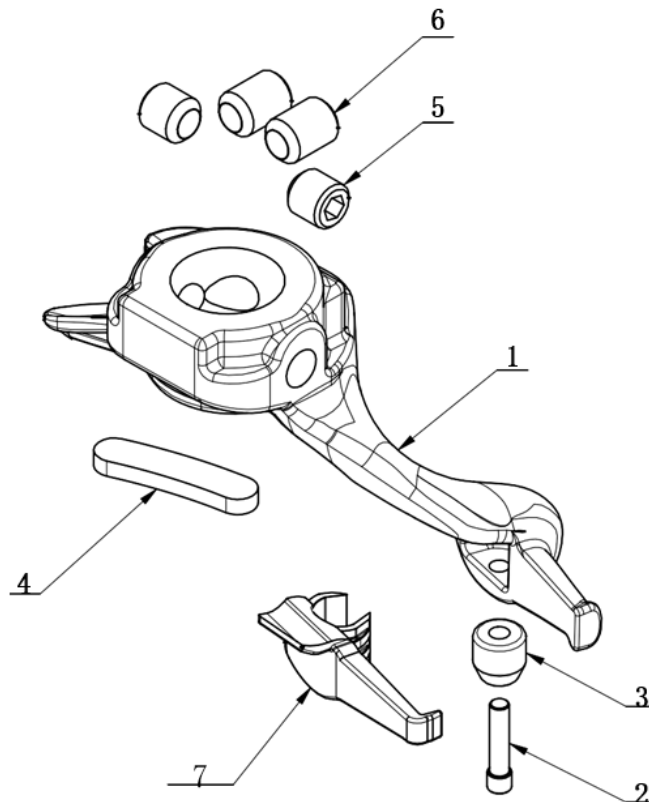
ITEM	PART NO.	DESCRIPTION	QTY
1	PBH 1/4-1/8	FEMALE BRANCH TEE	1
2	C-54-1000024	PRESSURE GAUGE	1
3	CT-K-4100001	SAFE VALVE	1
4	C-54-1000025	LOCKNUT	1
5	C-54-1000027	JOINT SEALING GASKET	1



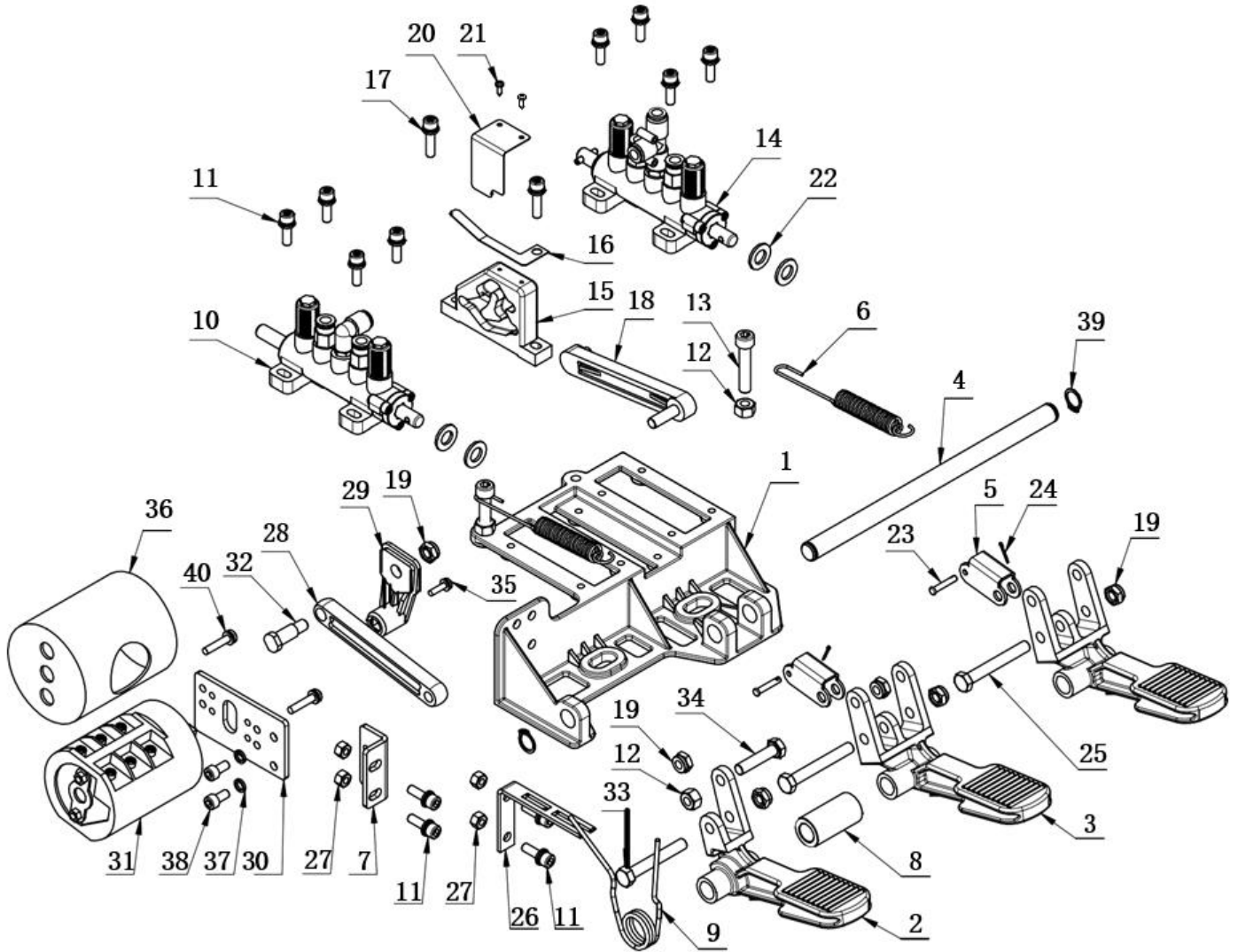
ITEM	PART NO.	DESCRIPTION	QTY
1	C-31-1310000	SWING ARM	1
2	C-31-1300001	PLATE	1
3	C-31-1300002	CONE WASHER	1
4	C-31-1300003	BASE BRACKET	1
5	C-31-1300004	LOCKING HANDLE	1
6	C-31-1300005	LOCKING WASHER	1
7	C-31-1300006	LOCKING PLATE	1
8	C-31-1300007	HEXAGON SHAFT	1
9	C-01-1300001	VERTICAL SHAFT SPRING	1
10	C-31-1300010	PROTECTIVE COVER	1
11	GB79-M12x40	INNER HEX CYLINDRICAL SET SCREW	1
12	C-31-1300012	RUBBER COVER	1
13	C-71-1300006	VERTICAL SHAFT COVER	1

14	C-54-0001000	DEMOUNTING HEAD ASSEMBLY	1
15	C-54-1300007	SHOCK ABSORBER WASHER	1
16	C-54-1300008	PRESS WASHER	1
17	GB95-8	FLAT WASHER	2
18	GB93-8	STANDARD SPRING WASHER	2
19	GB5783-M8x30	HEX BOLT	1
20	GB5783-M8x20	HEX BOLT	1
21	GB41-M12	HEX NUT	1
22	GB70.1-M10x30	INNER HEX CYLINDRICAL SCREW	1
23	GB93-10	STANDARD SPRING WASHER	1
24	GB5783-M10x25-12.9	HEX BOLT	1

C-54-0001000



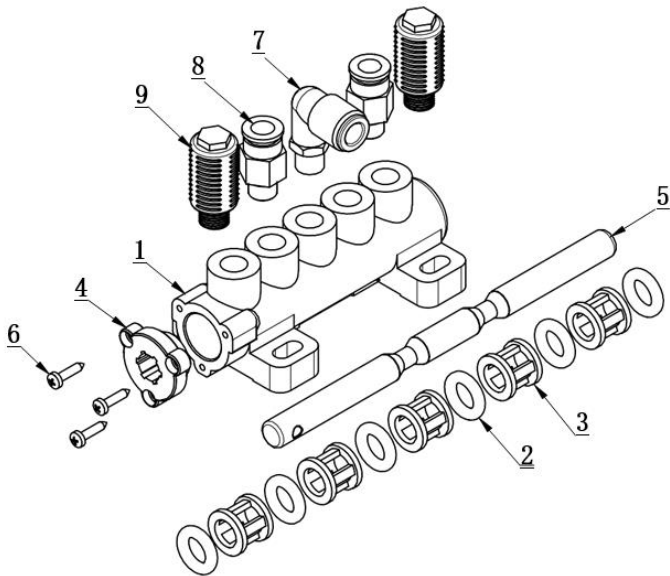
ITEM	PART NO.	DESCRIPTION	QTY
1	C-54-1300004	DEMOUNTING HEAD	1
2	C-54-1300006	ROLLER BOLT	1
3	C-54-1300009	ROLLER	1
4	C-54-8000007	TOOL HEAD TAIL WASHER	1
5	GB80-M12x12	INNER HEX RECESSED SET SCREW	2
6	GB80-M12x16	INNER HEX RECESSED SET SCREW	2
7	C-54-1300014	SHEATH	1



ITEM	PART NO.	DESCRIPTION	QTY
1	CT-D-5100001	PEDAL BRACKET	1
2	CT-D-9100001	PEDAL	1
3	CT-D-9100002	PEDAL	2
4	CT-D-5100004	BOTTOM SHAFT	1
5	CT-D-5100005	CONNECTION PART	2
6	CT-D-5100007	SPRING	2
7	CT-D-5100008	SWITCH SUPPORT	1
8	CT-D-2100001	SPACER	1
9	CT-D-2100002	TORSION SPRING	1
10	CT-D-0012000	VALVE	1
11	GB9074-M6x20	COMBINATION SCREW	12
12	GB41-M8	HEX NUT	3
13	GB70.1-M8x40	INNER HEX CYLINDRICAL SCREW	2
14	CT-D-0010000	VALVE	1
15	CT-D-1100009B	CAM	1
16	CT-D-2100004	FORK SPRING PLATE	1

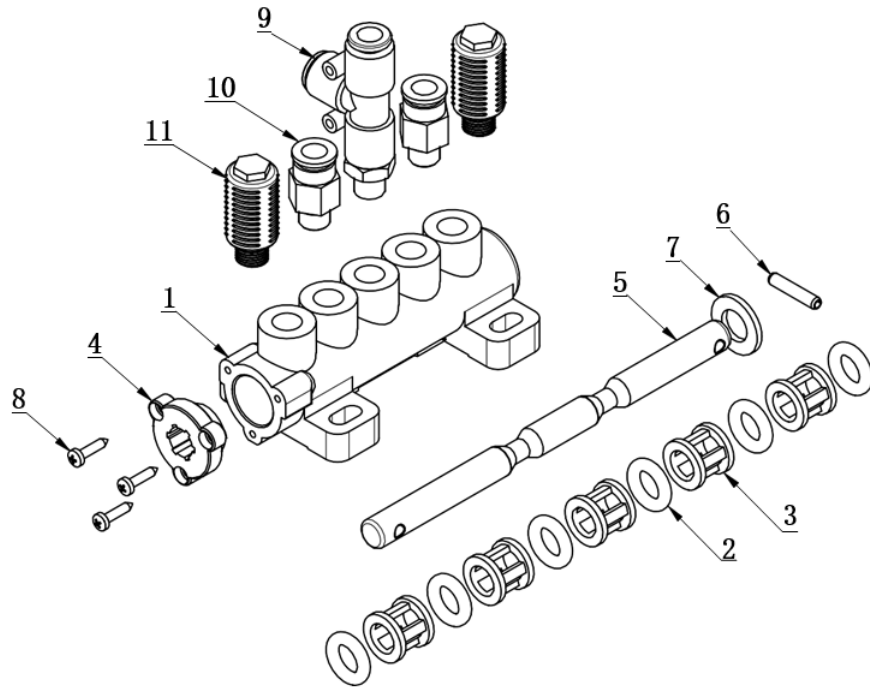
17	GB9074-M6x25	COMBINATION SCREW	2
18	CT-D-1100008	CAM CONNECTING ROD	1
19	GB889.1-M8	1-TYPE TORQUE TYPE HEX LOCK NUT	6
20	CT-D-1100011A	CAM BAFFLE PLATE	1
21	GB845-ST2.9x9.5 H C	CROSS PANHEAD TAP SCREW	2
22	GB95-10	FLAT WASHER	4
23	GB882-4x22	PIN SHAFT	2
24	GB91-1.6x10	SLOTTED PIN	2
25	GB5783-M8x60	HEX BOLT	2
26	CT-D-2100010	TORSION SPRING BRACKET	1
27	GB41-M6	HEX NUT	4
28	CT-D-2100011	CONNECTION ROD	1
29	CT-D-1100010	REVERSE LEVER	1
30	CT-D-5100009A	SWITCH SUPPORT	1
31	CT-D-1100018	SWITCH	1
32	CT-D-2100012	ROTATION SHAFT	1
33	GB5782-M8x55	HEX BOLT	1
34	GB5783-M8x35	HEX BOLT	1
35	GB9074.4-M4x16	COMBINATION SCREW	1
36	CT-D-1100014	SWITCH COVER	1
37	GB93-6	STANDARD SPRING WASHER	2
38	GB70.1-M6x12	INNER HEX CYLINDRICAL SCREW	2
39	GB894.1-14	SHAFT BIG RETAINING RING A-TYPE	2
40	GB9074.4-M5x25	COMBINATION SCREW	2

CT-D-0012000



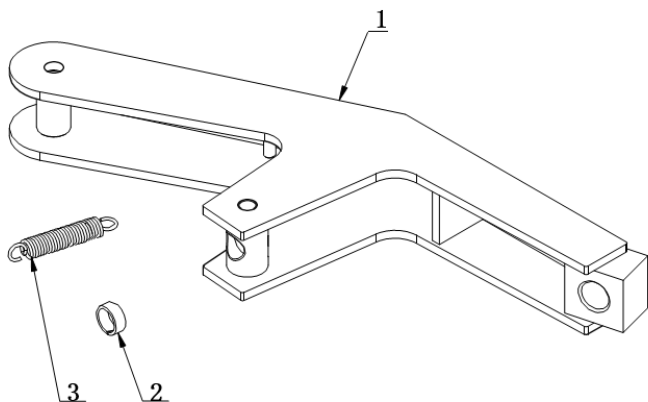
ITEM	PART NO.	DESCRIPTION	QTY
1	CT-D-5100001	PEDAL BRACKET	1
2	CT-D-9100001	PEDAL	1
3	CT-D-9100002	PEDAL	2
4	CT-D-5100004	BOTTOM SHAFT	1
5	CT-D-5100005	CONNECTION PART	2
6	CT-D-5100007	SPRING	2
7	CT-D-5100008	SWITCH SUPPORT	1
8	CT-D-2100001	SPACER	1
9	CT-D-2100002	TORSION SPRING	1

CT-D-0010000

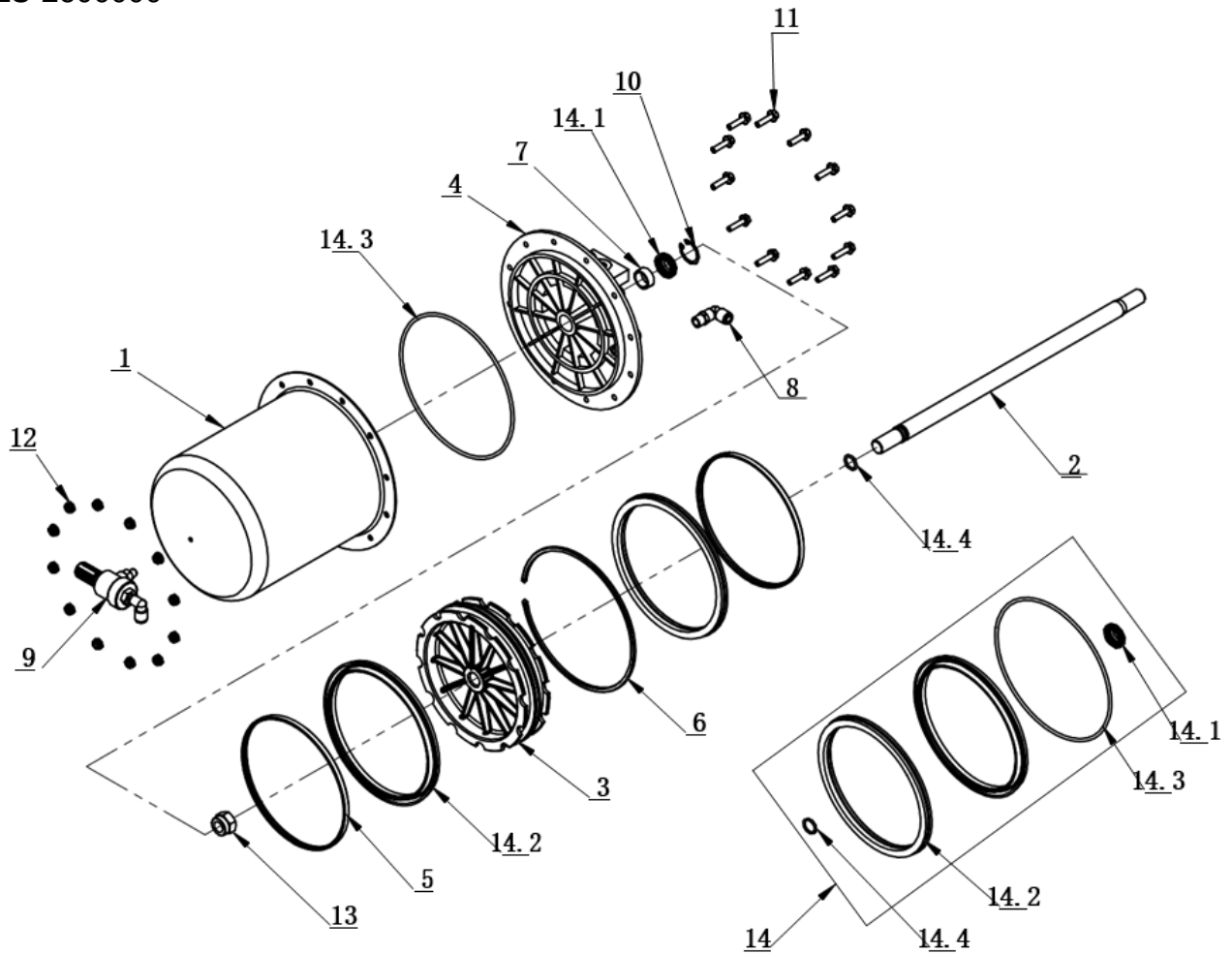


ITEM	PART NO.	DESCRIPTION	QTY
1	CT-D-1110001	VALVE BODY	1
2	CT-D-1110003	O-RING	6
3	CT-D-1110004	SPACER	5
4	CT-D-1110005	VALVE CAP	1
5	CT-D-2600001	VALVE ROD	1
6	GB879.1-4x20	CYLINDRICAL PIN, HEAVY	1
7	GB95-10	FLAT WASHER	1
8	GB845-ST2.9x13 H C	CROSS PANHEAD TAP SCREW	3
9	FPD 8-01	MALE RUN TEE	1
10	FPC 8-01	MALE STRAIGHT	2
11	FSK 01	PLASTIC PARTICLE SILENCER	2

CT-B-3000000

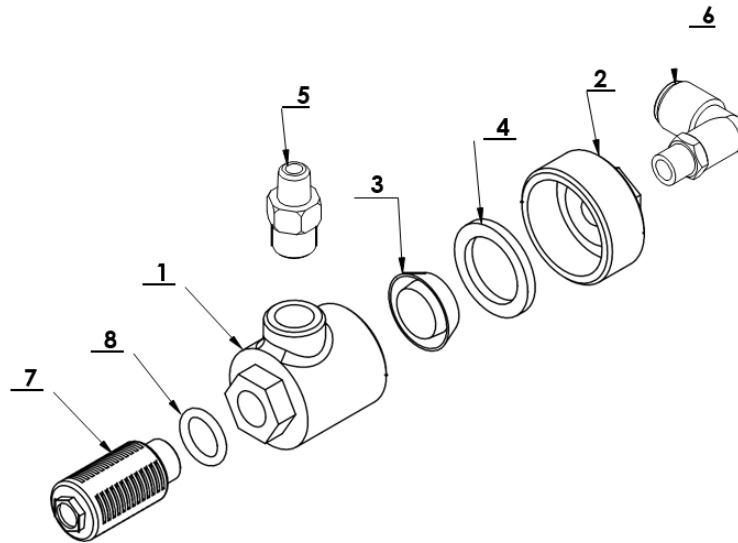


ITEM	PART NO.	DESCRIPTION	QTY
1	CT-B-3100000	BEAD BREAKER	1
2	CT-B-2000001	SLIDE SPACER	1
3	CT-B-2000002	SPRING	1



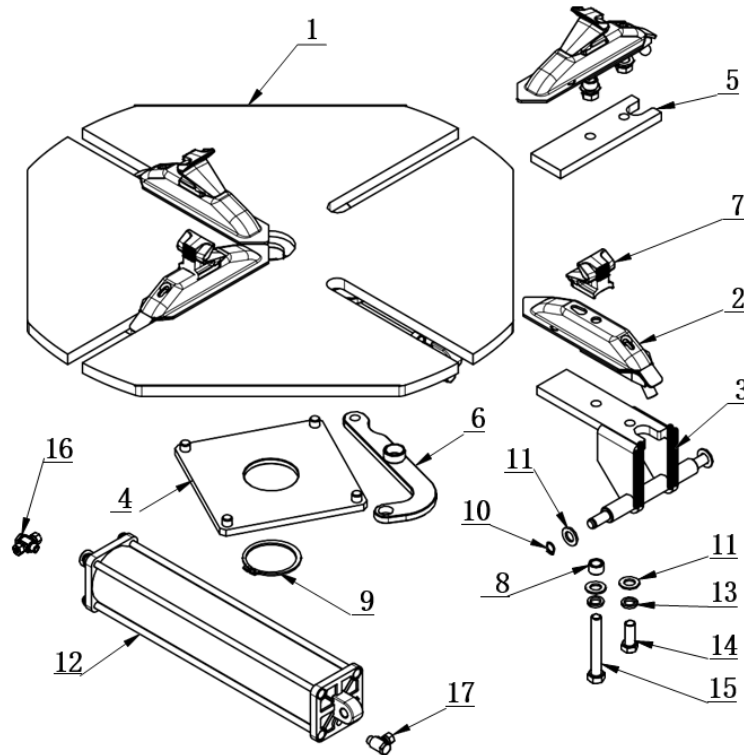
ITEM	PART NO.	DESCRIPTION	QTY
1	CT-LS-1100002	CYLINDER BODY	1
2	CT-LS-2100001	CYLINDER PISTON ROD	1
3	CT-LS-1100003	PISTON	1
4	CT-LS-1100004	CYLINDER COVER	1
5	CT-LS-1100006	CLAMP RING	2
6	CT-LS-1100007	PISTON SUPPORT RING	1
7	CT-LS-1100008	GUIDER SPACER	1
8	FPL 8-02	INSERT ELBOW, 8, R1/4	1
9	CT-LS-1320000	QUICK DEFLATE BODY VALVE	1
10	GB893.2-30	ELASTIC RETAINING RING B-TYPE	1
11	GB5789-AM6×25	HEX FLANGE BOLT	12
12	GB6177.1-M6	HEX FLANGE NUT	12
13	GB889.2-M18×1.5	NUT M18X1.5	1
14	CT-LS-1110000	AIR CYL SEAL KIT ASSEMBLY	1
14.1	CT-Y-0160007	SEAL-ROD, CYLINDER	1
14.2	CT-LS-1100009	Y-RING	2
14.3	GB3452.1-185×3.55-G	O-RING G-TYPE	1
14.4	GB3452.1-15.5×2.65-G	HYD-AIR RUBBER O-RING G-TYPE	1

CT-LS-1320000



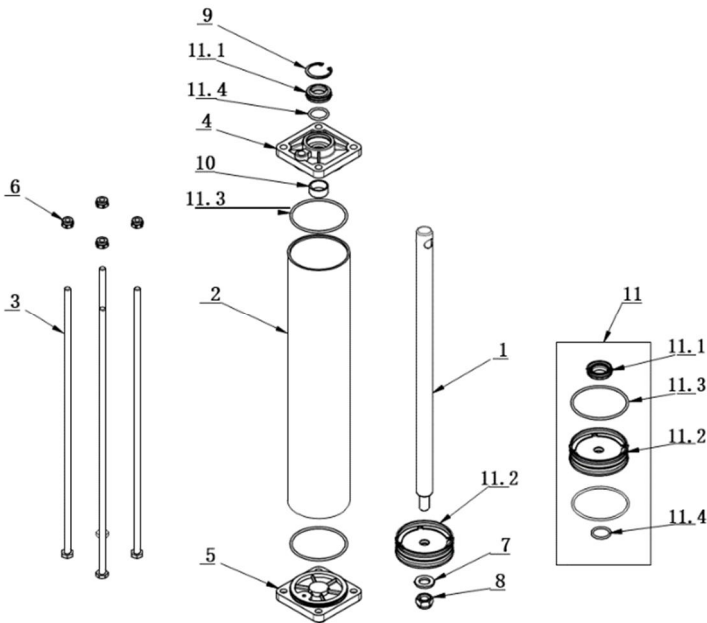
ITEM	PART NO.	DESCRIPTION	QTY
1	CT-LS-1310001	LOWER COVER, DEFLATE VALVE	1
2	CT-LS-1310002	COVER, DEFLATE VALVE	1
3	CT-LS-1310003	PISTON	1
4	CT-LS-1310004	RUBBER WASHER	1
5	CT-K-1100007	FITTING	1
6	FPL 8-01	INSERT ELBOW, 8, R1/8	1
7	FSK 02	PLASTIC PARTICLE SILENCER	1
8	GB3452.1-12.8x2.65-G	HYD-AIR RUBBER O-RING G-TYP	1

CT-Y-2100000



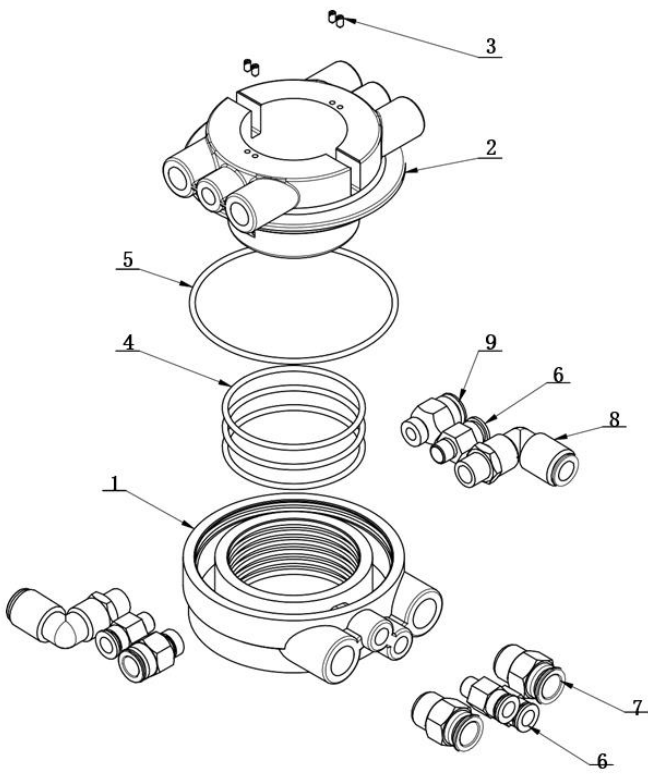
ITEM	PART NO.	DESCRIPTION	QTY
1	CT-Y-1130000	TURNTABLE	1
2	CT-Y-0220000	SLIDE COVER	4
3	CT-Y-1140000	BRACKET-CYLINDER	2
4	CT-Y-0150000	SQUARE TURNTABLE	1
5	CT-Y-2100001	BOTTOM CHUTE PRESS PLATE	2
6	CT-Y-1150000	CONNECTION PLATE	4
7	CT-Y-0100002	CLAMP	4
8	CT-Y-0100003	SPACER	4
9	GB894.1-65	ELASTIC RETAINING RING A-TYPE	1
10	GB894.1-12	ELASTIC RETAINING RING A-TYPE	4
11	GB95-12	FLAT WASHER	12
12	CT-Y-1120000	CYLINDER ASSEMBLY	2
13	GB93-12	STANDARD SPRING WASHER	8
14	GB5783-M12x30	HEX BOLT	4
15	GB5782-M12x83-W8.8	HEX BOLT	4
16	CT-Y-0100008	HINGE ELBOW, 8 G1/8	2
17	CT-Y-0100006	HINGE ELBOW, 8 G1/8	2

CT-Y-1120000



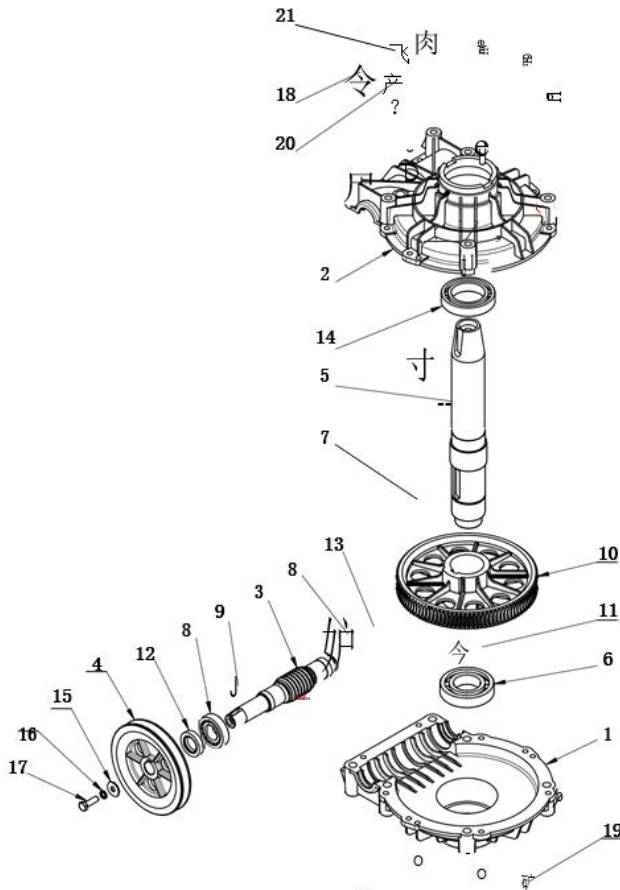
ITEM	PART NO.	DESCRIPTION	QTY
1	CT-Y-1120001	SHAFT-CYLINDER	1
2	CT-Y-1120002	SLEEVE-CYLINDER 70	1
3	CT-Y-1120003	BOLT	4
4	CT-Y-0160002	FRONT COVER	1
5	CT-Y-0160003	REAR COVER	1
6	GB889.1-M8	TORQUE HEX LOCK NUT	4
7	GB95-12	FLAT WASHER	1
8	GB889.1-M12	TORQUE HEX LOCK NUT	1
9	GB893.1-30	RETAINING RING A-TYPE	1
10	GB12613-23x20x10	BEARING-SLIDE	1
11	CT-Y-1121000	CYLINDER SEAL KIT ASSY	1
11.1	CT-Y-0160007	SEAL-ROD, CYLINDER	1
11.2	CT-Y-0161000	PISTON	1
11.3	GB3452.1-65x2.65-G	HYD-AIR O-RING G-TYP	2
11.4	GB3452.1-20x2.65-G	HYD-AIR O-RING G-TYP	1

CT-Q-4000000



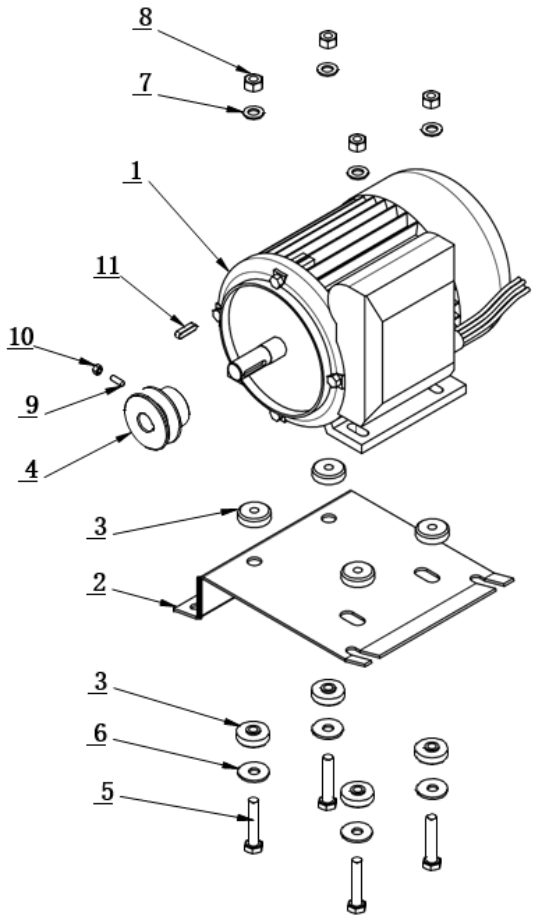
ITEM	PART NO.	DESCRIPTION	QTY
1	CT-Q-2000001	AIR GUIDE FIXED BODY	1
2	CT-Q-2000002	ROTATING BODY	1
3	GB71-M3x6	SLOT HEAD SET SCREW	4
4	GB3452.1-60x2.65-G	RUBBER O-RING G TYPE	3
5	GB3452.1-90x2.65-G	RUBBER O-RING G TYPE	1
6	FPC 8-01	MALE STRAIGHT	4
7	FPC 12-03	MALE STRAIGHT	2
8	FPL 10-02	MALE ELBOW	2
9	FPC 10-02	MALE STRAIGHT	2

CT-J-2100000



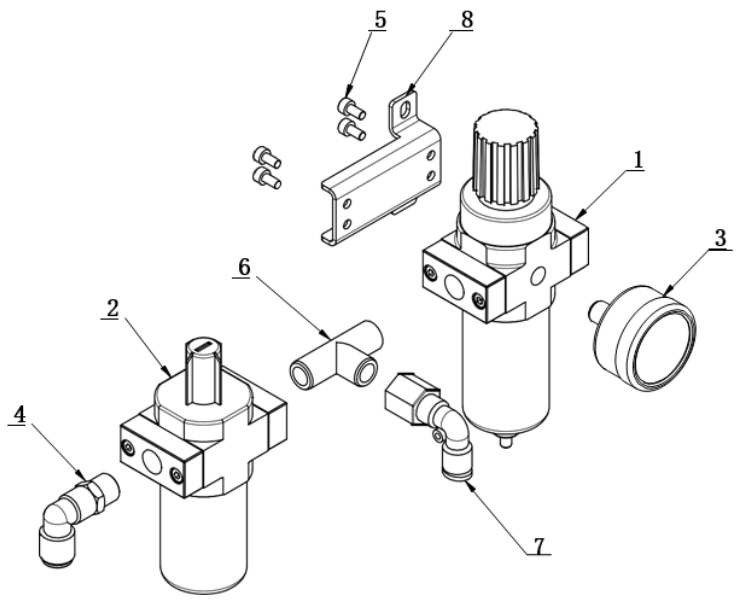
ITEM	PART NO.	DESCRIPTION	QTY
1	CT-J-0000005	GEARBOX	1
2	CT-J-0000006	GEARBOX TOP	1
3	CT-J-0000004	WORM ROD	1
4	CT-J-0000007	BELT PULLEY(148MM)	1
5	CT-J-0000002	WORM SHAFT	1
6	GB276-6208	BALL BEARING	1
7	GB1096-12x8x56	FLAT KEY	1
8	GB297-30205	BEARING	2
9	GB1099.1-6x9x22	SEMI-CIRCULAR KEY	1
10	CT-J-0000003	WORM	1
11	GB894.1-50	RETAINING RING A-TYPE	1
12	GB13871.92-FB25-40	SEALED RING	1
13	CT-J-0100000	CAP	1
14	GB276-6010	BEARING	1
15	GB96.1-8	LARGE WASHER A GRADE	1
16	GB93-8	STD SPRING WASHER	1
17	GB5783-M8x25	HEX BOLT	1
18	GB70.1-M8x30	INNER HEX SCREW	8
19	GB41-M8	HEX NUT	8
20	GB3452.1-13.2x2.65-G	HYD-AIR RUBBER O-RING	1
21	TC-10-1400013	BOLT	1

CT-DJ-0211212UL

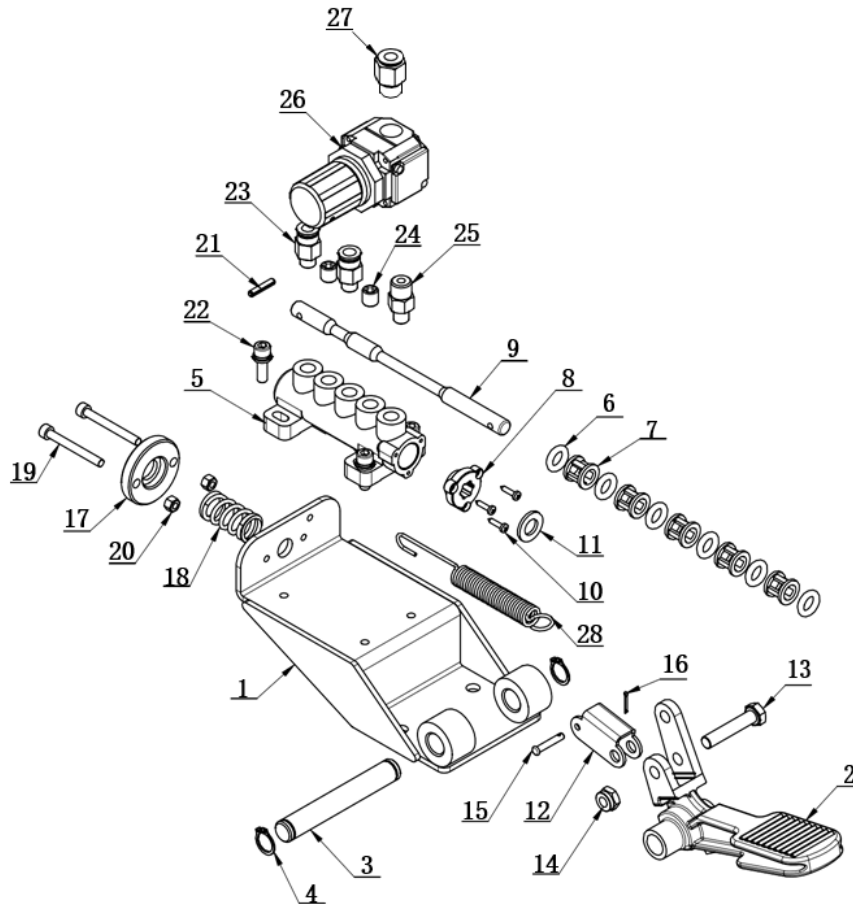


ITEM	PART NO.	DESCRIPTION	QTY
1	CT-DJ-0011212UL	UL MOTOR (110V,60Hz,1P,1.1Kw)	1
2	CT-DJ-0000001	MOTOR SUPPORT	1
3	CT-DJ-0000002	RUBBER WASHER	8
4	CT-DJ-0000003	MOTOR BELT PULLEY	1
5	GB5783-M10x50	HEX BOLT	4
6	GB96.1-10	LARGE WASHER A GRADE	4
7	GB95-10	FLAT WASHER	4
8	GB41-M10	HEX NUT	4
9	GB78-M5x16	INNER HEX SET SCREW	1
10	GB41-M5	HEX NUT	1
11	GB1096-6x6x25	FLAT KEY	1

CT-F-3121100



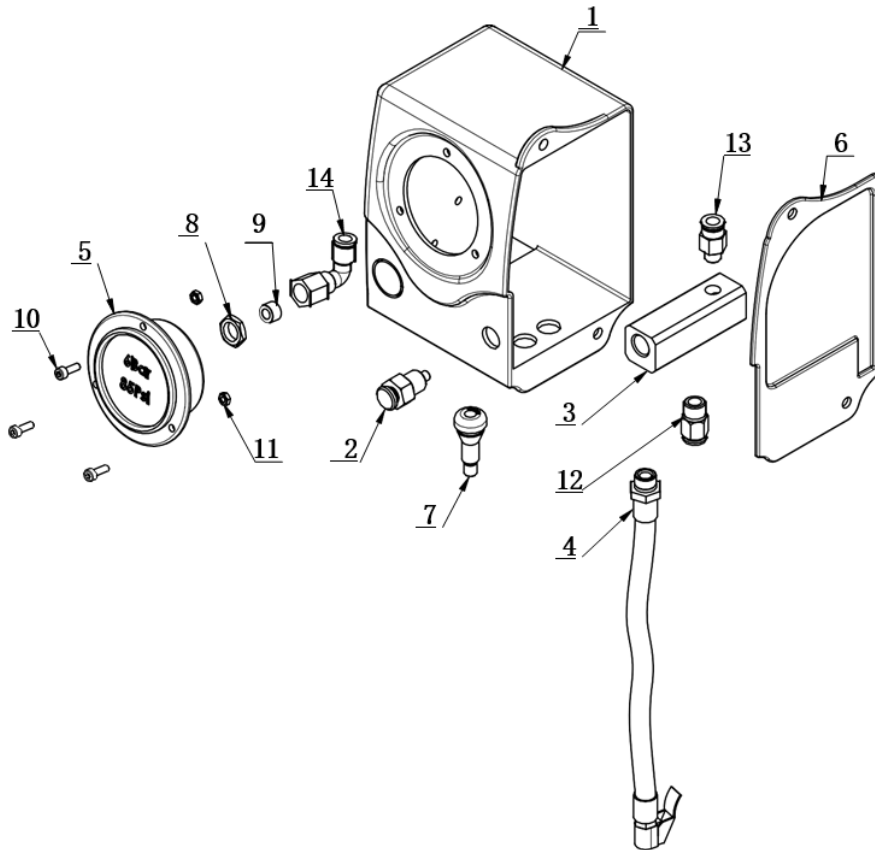
ITEM	PART NO.	DESCRIPTION	QTY
1	CT-F-3000010	WATER CPU	1
2	CT-F-3000020	OIL CPU	1
3	CT-F-2000003	PRESSURE GAUGE	1
4	FPL 8-02	ELBOW, 8, R1/4	1
5	GB70.1-M4x8	HEX SCREW	4
6	PEH 02-02	FEMALE UNION TEE	1
7	FPLF8-02	ELBOW, 8, R1/4	1
8	CT-F-2000009	REGULATOR BRACKET	1



ITEM	PART NO.	DESCRIPTION	QTY
1	CT-K-1A10000	PEDAL BRACKET	1
2	CT-D-9100001	PEDAL	1
3	CT-K-1100006	SHAFT	1
4	GB894.1-14	SHAFT RETAINING RING A-TYPE	2
5	CT-D-1110001	VALVE BODY	1
6	CT-K-1100009	O-RING	6
7	CT-D-1110004	SPACER	5
8	CT-D-1110005	VALVE CAP	1
9	CT-K-1A00002	VALVE STEM	1
10	GB845-ST2.9x13 HC	CROSS PANHEAD TAP SCREW	3
11	GB95-10	FLAT WASHER	1
12	CT-D-5100005	CONNECTION PART	1
13	GB5783-M8x40	HEX BOLT	1
14	GB889.1-M8	HEX LOCK NUT	1
15	GB882-4x22	PIN SHAFT	1
16	GB91-1.6x10	SLOTTED PIN	1
17	CT-K-1100002	MOVABLE PLATE	1
18	CT-K-1100003	SPRING	1
19	GB70.1-M5x45	HEX CYLINDRICAL SCREW	2
20	GB41-M5	HEX NUT	2

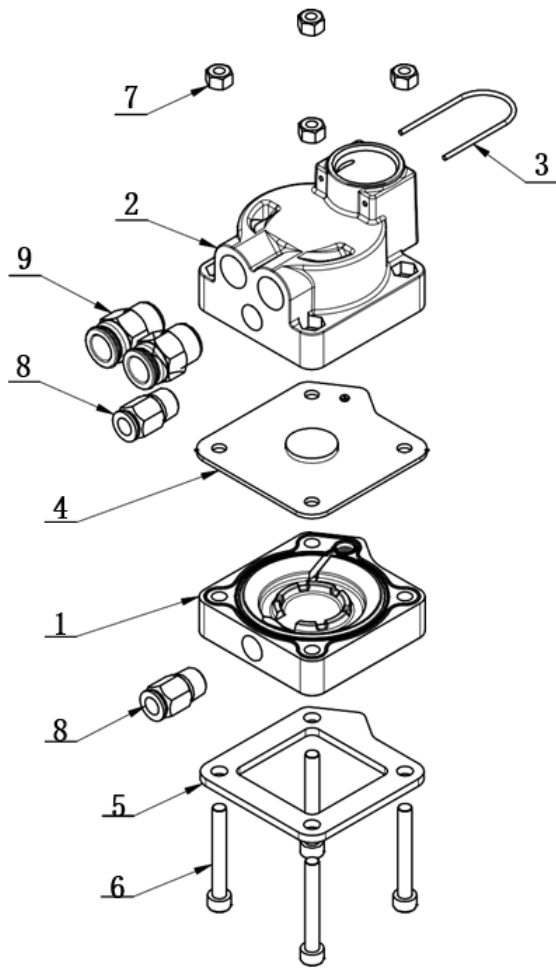
21	GB879.1-4x20	CYLINDRICAL PIN, HEAVY	1
22	GB9074-M6x20	COMBINATION SCREW	3
23	FPC 8-01	MALE STRAIGHT	2
24	JB/ZQ4447-1997-G1/8x10	SCREW PLUG, G1/8x10	2
25	CT-K-1100007	FITTING	1
26	AR20-01	PRESSURE ADJUST VALVE	1
27	FPC 8-02	MALE STRAIGHT	1
28	CT-K-1A00001	SPRING	1

CT-K-3100000



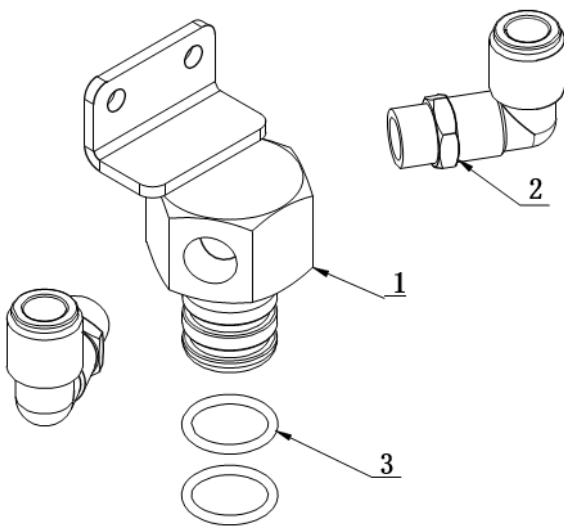
ITEM	PART NO.	DESCRIPTION	QTY
1	CT-K-3100001	PRESSURE GAUGE COVER	1
2	CT-K-3110000	EXHAUST VALVE ASSY	1
3	CT-K-3120000	AIR DIST. VALVE	1
4	CT-K-3100003	INFLATING HOSE	1
5	CT-K-3100004	PRESSURE GAUGE	1
6	CT-K-3100005	COVER	1
7	CT-K-3100006	AIR VALVE	1
8	C-54-1000025	LOCKNUT	1
9	C-54-1000027	SEALING GASKET	1
10	GB70.1-M4x12	HEX SCREW	3
11	GB6170-M4	HEX NUT 1-TYPE	3
12	FPC 8-02	MALE STRAIGHT	1
13	FPC 8-01	MALE STRAIGHT	1
14	FPLF 8-02	FEMALE ELBOW	1

CT-K-2200000S

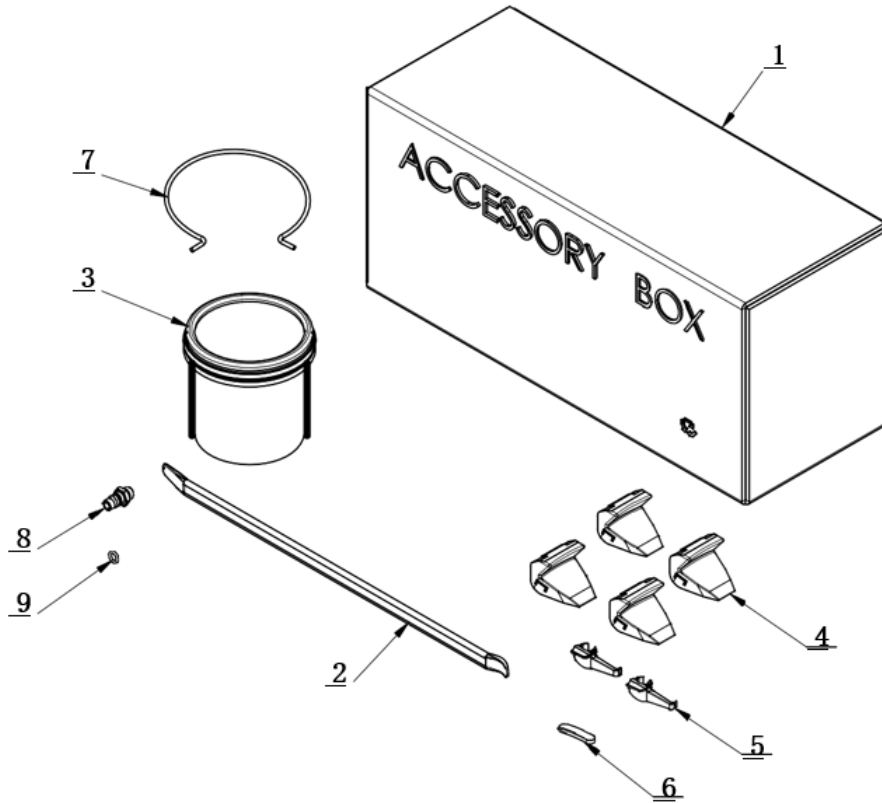


ITEM	PART NO.	DESCRIPTION	QTY
1	CT-K-2200004	CONTROL COVER	1
2	CT-K-2200005	EXHAUST COVER	1
3	CT-K-2200006	CONNECTING PIN	1
4	CT-K-2210000	PANEL	1
5	CT-K-2200003	WASHER	1
6	GB70.1-M6x45	HEX SCREW	4
7	GB41-M6	HEX NUT	4
8	FPC 8-02	MALE STRAIGHT	2
9	FPC 12-03	MALE STRAIGHT	2

C-54-1000014S



ITEM	PART NO.	DESCRIPTION	QTY
1	C-54-1000014H	VALVE CONNECTOR	1
2	FPL 12-03	INSERT ELBOW 12,R3/8	2
3	GB3452.1-21.2x2.65-G	HYD-AIR O-RING G TYPE	2



ITEM	PART NO.	DESCRIPTION	QTY
1	C-54-8000002	ACCESSORY BOX	1
2	C-54-8000003	20" CROWBAR	1
3	C-54-8100000	GREASE CONTAINER	1
4	C-54-8000005	CLAMP PROTECTOR COVER	4
5	C-54-1300014	SHEATH	2
6	C-54-8000007	TOOL HEAD WASHER	1
7	C-54-8000004	WIRE BRACKET RING	1
8	C-54-8000011	AIR SUPPLY CONNECTOR	1
9	GB3452.1-8×2.65-A	HYD-AIR O-RING A TYPE	1

LIMITED WARRANTY

Structural Warranty:

The following parts and structural components carry a five year warranty:

Columns	Arms	Uprights	Swivel Pins
Legs	Carriages	Overhead Beam	
Tracks	Cross Rails	Top Rail Beam	

Limited One-Year Warranty:

Tuxedo Distributors, LLC (Tuxedo) offers a limited one-year warranty to the original purchaser of Lifts and Wheel Service equipment in the United States and Canada. Tuxedo will replace, without charge, any part found defective in materials or workmanship under normal use, for a period of one year after purchase. The purchaser is responsible for all shipping charges. This warranty does not apply to equipment that has been improperly installed or altered or that has not been operated or maintained according to specifications.

Other Limitations:

This warranty does not cover:

1. Parts needed for normal maintenance
2. Wear parts, including but not limited to cables, slider blocks, chains, rubber pads and pulleys
3. Replacement of lift and tire changer cylinders after the first 30 days. A seal kit and installation instructions will be sent for repairs thereafter.
4. On-site labor

Upon receipt, the customer must visually inspect the equipment for any potential freight damage before signing clear on the shipping receipt. Freight damage is not considered a warranty issue and therefore must be noted for any potential recovery with the shipping company.

The customer is required to notify Tuxedo of any missing parts within 72 hours. Timely notification must be received to be covered under warranty.

Tuxedo will replace any defective part under warranty at no charge as soon as such parts become available from the manufacturer. No guarantee is given as to the immediate availability of replacement parts.

Tuxedo reserves the right to make improvements and/or design changes to its lifts without any obligation to previously sold, assembled or fabricated equipment.

There is no other express warranty on the Tuxedo lifts and this warranty is exclusive of and in lieu of all other warranties, expressed or implied, including all warranties of merchantability and fitness for a particular purpose.

To the fullest extent allowed by law, Tuxedo shall not be liable for loss of use, cost of cover, lost profits, inconvenience, lost time, commercial loss or other incidental or consequential damages.

This Limited Warranty is granted to the original purchaser only and is not transferable or assignable.

Some states do not allow exclusion or limitation of consequential damages or how long an implied warranty lasts, so the above limitations and exclusions may not apply. This warranty gives you specific legal rights and you may have other rights, which may vary from state to state.

8320 E Hwy 67, Alvarado, TX 76009
Ph. 817-558-9337 / Fax 817-558-9740