



1 DID YOU KNOW...When you need to use head protection?

- According to the Canadian centre for occupational health and safety (CCOHS) a hardhat must be worn whenever there is a risk from head injuries from "impacts, falling or flying objects, or electrical shock."
- **Some examples of situations where a hardhat must be worn is:** When objects or debris might fall from above and strike workers on the head, or when employees may strike their heads against fixed objects, like supports, beams, or other equipment. Also, When there is the possibility that workers' heads will make contact with electrical hazards.

2 DYK what the qualities of good protective headwear are?

- **It must** - Resist penetration and blows to the head, provide a suspension system to absorb impact, provide insulation from electrical shocks, when necessary, or be water resistant and slow burning.

3 DYK what the different classes of head protection are?

- There are three classes of head protection based on the amount of electrical protection they provide: Class E, Class G, and Class C. **Class E (electrical)** has been tested to withstand up to 20,000 volts of electricity. **Class G (general)** has been tested to 2,200 volts. **Class C (conductive)** offers no electrical protection. Hard hats and helmets are labeled with the appropriate class.

4 DYK what the different types of certified head protection are?

- **Type I** - protects the head from impacts to the top, like falling debris or objects.
- **Type II** - protects the head from impacts to the top and lateral sections, like bumping into a stationary object.
- Hard hats and helmets are labeled with the appropriate type of protection they provide.

5 DYK if bump caps are CSA approved?

- Bump caps are not **CSA** or **ANSI** approved. In addition, bump caps do not protect against falling objects. Consequently, they are never appropriate for workplaces that require hard hat protection.

6 DYK how hard hats and safety helmets differ?

- As protective headgear, hard hats and safety helmets differ by where workers are working when they wear them.
- **Hard hats** are worn by workers on the ground subject to potential falling debris or protruding objects.
- **Safety helmets** are worn by workers at height who have the potential to fall. Safety helmets are rated and certified the same as hard hats.
- Safety helmets and hard hats also look different. Helmets typically sit closer to the head, have built-in chin straps, and little to no brim around the edge. They also have more internal padding to protect the head on impact, and may include attachable visors, ear protection, and be made from high visibility materials. Safety helmets generally offer enhanced protection from lateral impacts over hard hats. Contractors may find that safety helmets are slightly more expensive than hard hats. The higher cost is mainly due to the extra protection for both the top of the head and the side, along with the optional added equipment.

7 DYK your hard hat has safety markings within, providing vital information?

- **Look for the following information** - Manufacturer's name, Certification body logo (SEI) along with the CSA standard, the type (I or II), the class (E, G, or C), the reverse wear symbol if applicable, the size, and the date of manufacturing.

8 DYK how long a hard hat is good for?

- Hard hats must be replaced when the hard hat develops dents, cracks, has been penetrated, shows signs of wear, or has been subject to an impact. A **CCOHS** expiration date does not exist, but manufacturers may set a date for expiration.
- Most replace their hard hat shells every 5 years assuming the hardhat has been cared for and stored according to manufacturer's instructions. The suspension is typically replaced on an annual basis.

9 DYK how to inspect your hard hat?

- According to **OSHA**, beyond a visual safety inspection, hard hats should be squeezed with two hands, applying force. If squeaking or unusual sounds are detected, it is time for a replacement.

10 DYK the proper way to wear a hard hat?

- Construction and industry work require that each worker takes responsibility for their safety, which includes taking measures to properly wear and use protective equipment and gear. Follow this step by step guide to ensure you or your team are wearing your hard hats correctly:
- **Step 1** - Check the hardhat for any cracks or signs of damage
- **Step 2** - Remove all other headwear while wearing WorkHorse hardhats
- **Step 3** - Ensure the Hardhat is oriented properly; It is possible to put your hard hat on forwards or backwards. Look for the reverse donning arrow marking to denote this feature. If your hard hat does not include the reverse donning symbol, the proper way to wear the hard hat would be with the brim pointing straight ahead.
- **Step 4** - Place hard hat straight down on the top of your head
- **Step 5** - Adjust ratchet left or right to achieve a snug fit
- **Step 6** - Loosen ratchet to remove hard hat
- **Step 7** - Store hard hat away from the sun and extreme temperatures, where it will not become damaged

11 DYK the different styles of hard hats?

- The two main and most common styles for hard hats are the cap style hard hats and full brim hard hats.
- Caps have a front brim with a rolled edge that protects the head, forehead, and part of the face.
- Full-brim hats have a wider brim that covers the head, face, nose, ears, and neck.



12 DYK the difference between the CSA and ANSI hard hat standards?

- Hardhats can be certifiable to both the CSA and/or ANSI standard.
- The difference between the two standards is CSA is recognized in Canada whereas ANSI is the standard recognized in the U.S.A. It is not a fair assessment to say that one standard is better than the other since both are accepted standards in their respective countries.
- All WORKHORSE hardhats have undergone successful testing to the CSA Z94.1 and the ANSI Z87.1 standards.

13 A sample of hard hat markings, showing size/manufacture date



14 Continues on next page →

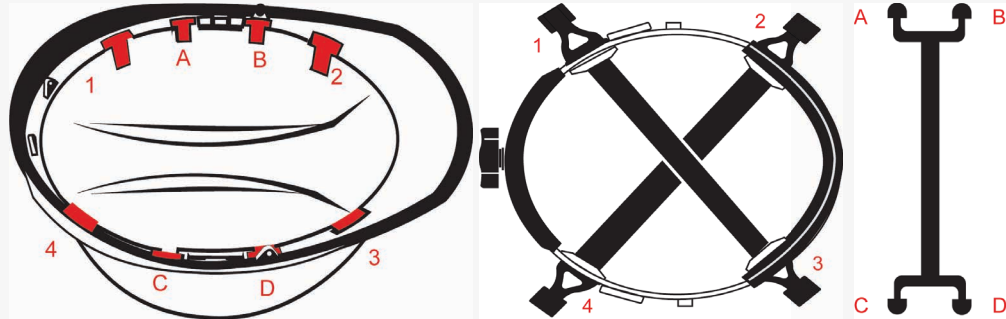




14 DYK how to install 6-point hard hat suspension?

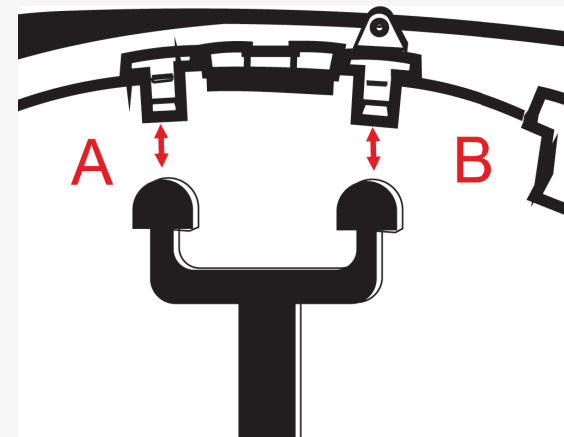
a) Slot and Suspension Locations

- Visually verify each slot and suspension point
- Use the below images to match the slot locations to the corresponding suspension points (the 'A' suspension point goes into 'A' slot in the helmet)



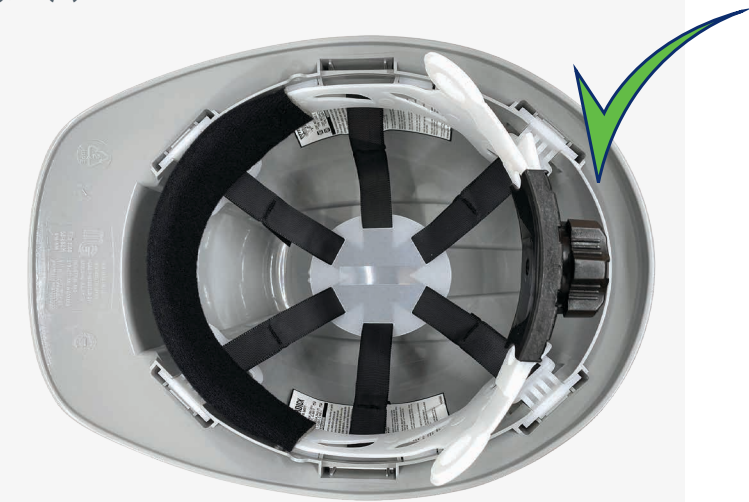
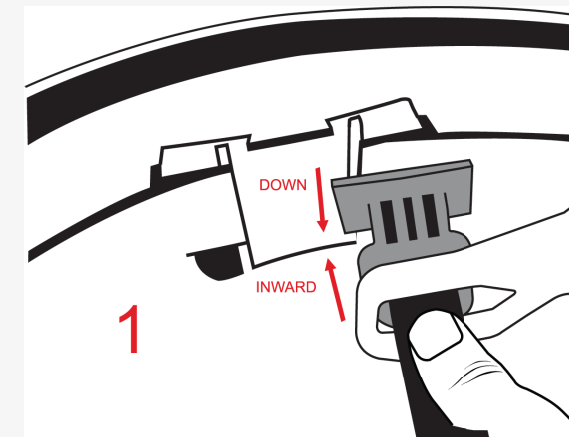
b) Installing the 2-Point Suspension

- Clip the 2-point suspension into the corresponding helmet slots (see first image to match helmet slot with suspension points)
- Repeat on the other side for (C) and (D)



c) Installing the 4-Point Suspension

- Clip the 4-point suspension into the corresponding helmet slots, one suspension point at a time (see first image)
- Push down and inward on the suspension point to force it into the helmet slot
- Repeat on all other suspension points (B), (C), & (D)



15 DYK what the different colours of hard hats mean?

- **White** - Often easy to spot in a sea of other colors, white hard hats are usually worn by anyone in a supervisory position, including managers, architects, engineers and foremen.
- **Green** - Typically worn by your site's safety officers or inspectors, new hires and trainees can also wear green.
- **Yellow** - Workers who operate any heavy machinery or earth movers often wear yellow, as well as employees doing general construction labor.
- **Brown** - Workers who do any form of welding or other high-heat jobs typically wear brown.
- **Orange** - Due to its high visibility, most road construction workers wear orange hats. They can also be given to new hires and site visitors.
- **Blue** - Electricians and carpenters frequently wear blue hats. Interim workers and employees in a technical advisory role can also wear blue.
- **Red** - Firefighters other employees with emergency training often wear red hats.
- **Grey** - These are most often issued to visitors on the work site.
- **Pink** - These hard hats tend to be a personal preference. Certain businesses may also try to discourage forgetfulness by issuing a pink hat to any worker who accidentally left their own hard hat at home.



All WORKHORSE® hard hats are available in a variety of different colours. Please refer to this as a general rule of thumb for what each colour represents.