

SUMP PUMP APPLICATION

STEP 3

Prepare your choice of discharge pipe size and check valve

STEP 2

Sump pit 18" diameter X 25" depth

STEP 7

Fill the basin and test the operation

STEP 8

Review and check connections for leaks

STEP 6

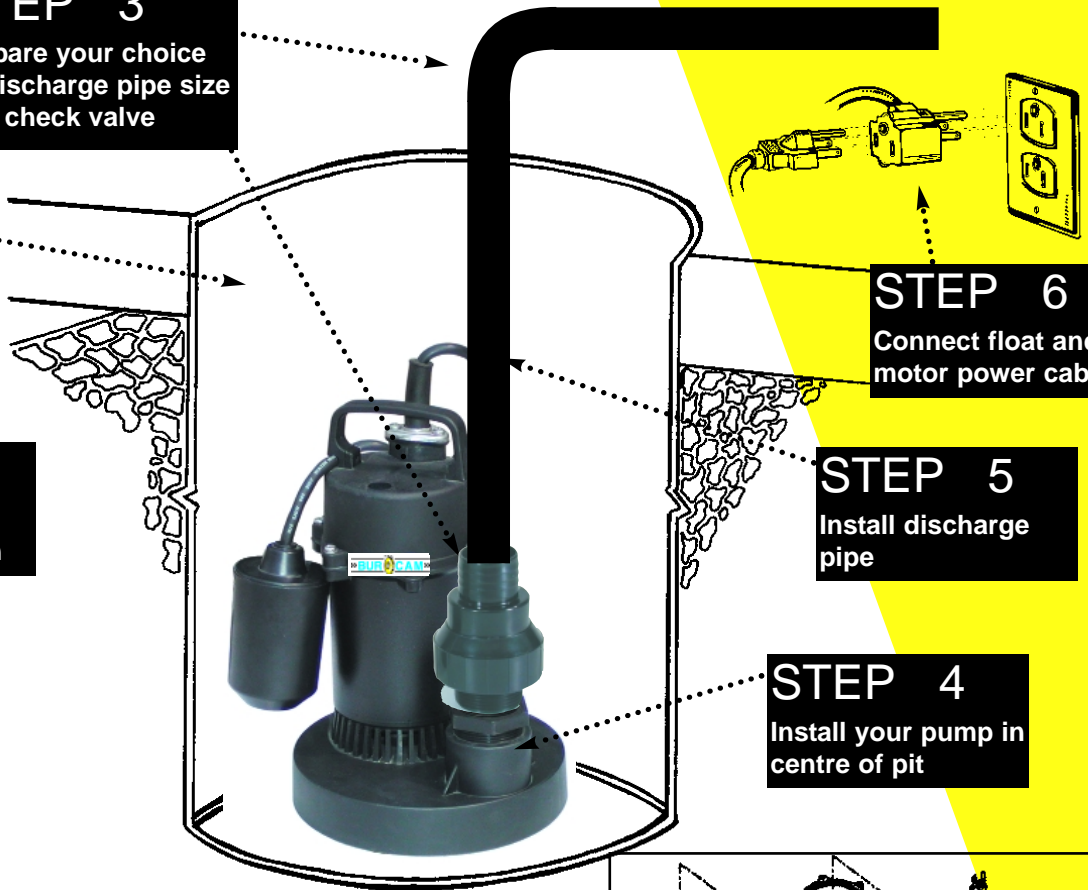
Connect float and motor power cable

STEP 5

Install discharge pipe

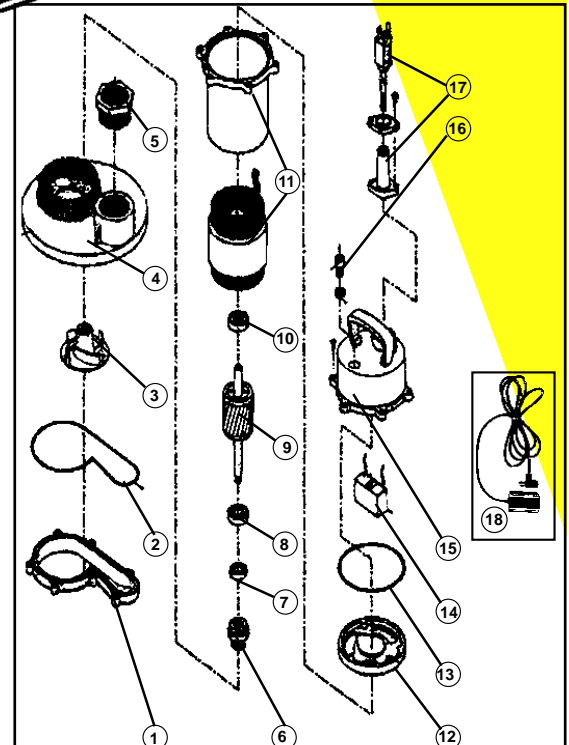
STEP 4

Install your pump in centre of pit



REPAIR PARTS

REF. PART	DESCRIPTION	REF. PART	DESCRIPTION		
1	350274	Pump volute	10	350340	Upper bearing
2	350129	"O" ring	11	350272	Stator
3	350270	Impeller	12	350286.1	Bearing housing
4	350276	Pump base	13	350118	Pump gasket
5	350277	Discharge reducer	14	350273	Capacitor
5	350322	Hose adaptor	15	350288	Upper casing
6	350278	Mechanical seal	16	350289	Screw (6)
7	350125	Oil seal	17	350294	Power cable
8	350340	Lower bearing	18	450453	Mechanical switch
9	350271	Rotor			



Repair parts may be ordered from your authorized point of sale or from
BUR-CAM PUMPS